

LMEZ-Micro

LED - MEZ Luminaire - Industrial / Commercial Lighting

Project:	Catalogue #:	Type:
Notes:		

Product Description

Premium-grade LED slim profile linear luminaire. This precision formed steel suspended mount luminaire comes with a lay-in frosted lens that offers visual comfort for new-construction indoor architectural and retail applications.

Applications

Lobby, Boardrooms, Office Area Lighting, Retail Stores and Supermarkets



Features

- Frosted lens
- Available in nominal lengths 4 & 8 feet
- 80+ and 90+ CRI
- Standard low voltage dimming (0-10v, 1%)

Featured Options

- Dimming Addressable Digital (DALI) Driver
- Straight Blade Louver

Optical System

Standard lay-in frosted diffuser offer high levels of efficiency and visual comfort.

Mounting

Various adjustable aircraft cable kits available. (Sold separately, see Page 2, Mounting Kits).

Construction

Precision-formed steel housing assembly.

Finish

White, polyester powder painted housing.

Electrical

Long life LEDs coupled with high efficiency drivers provide quality illumination. Rated to deliver L80 performance >60,000 hours.

Warranty

5 year limited warranty. For complete warranty, click here:

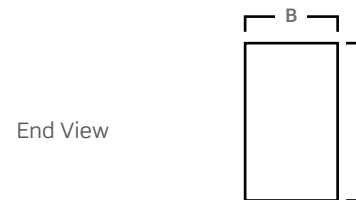
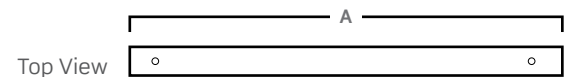


Approvals

- Built to CSA and UL standards.
- Suitable for Damp Location



Dimensions



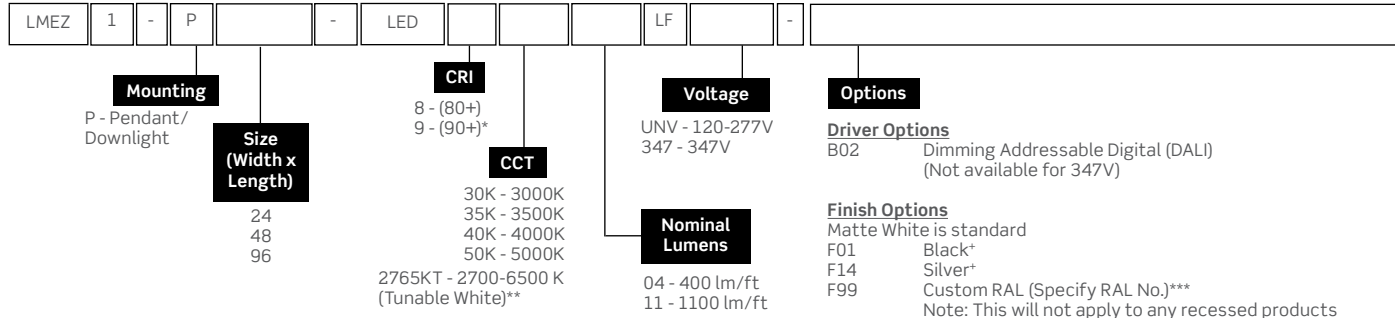
Size	A	B	C
48	44 3/8"	1 5/8"	2 1/2"
96	88 1/2"		

Consult installation guide for exact dimensions.

Project:	Catalogue #:	Type:
Notes:		

Order Key

EXAMPLE: LMEZ1-P48-LED840K04LFUNV



Louver Options

- L42 Straight Blade Louver - White
- L43 Straight Blade Louver - Black
- L44 Straight Blade Louver - Silver Gray

Wireless Controls Options

To view the controls guide [Click Here](#).

*90+ CRI reduces lumen output by 20%, Consult factory for lead times and availability

*Black (F01) reduces lumen output by 40%. Silver Gray (F14) reduces lumen output by 20%. Consult factory for higher lumen options. Black Acrylic Bottom Lens (P114) reduces lumen output by 75%.

** When Selecting 2765KT, if a tunable white-compatible control is not selected the luminaire will come standards with two sets of 0-10V wires for dimming and color tuning (see tunable white diagram for details). For compatible control options please consult factory.

***Minimum order quantity may apply. Consult factory.

Other options may be available, consult factory. Specifications and data subject to change without notice.

Performance Data

Size	Nominal lm per Foot Down	Total Delivered lm Down	Total Watts	lm/W
24"	400	833	8.1	102.7
	1100	2190	22.9	95.7
48"	400	1641	16	102.8
	1100	4381	45.8	95.7
96"	400	3282	31.9	102.8
	1100	8761	91.5	92

NOTE: Lumens and wattage based on 80CRI 4000K CCT at 25 Degrees Celsius

Performance Scaling Factor





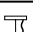
	50K	40K	35K	30K
80CRI	1.000	1.000	0.960	0.946
90CRI	0.875	0.875	0.836	0.809

Lifetime Expectancy

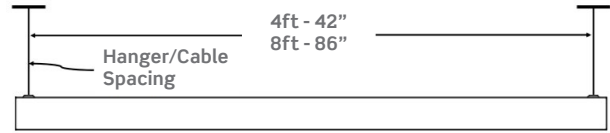
	Calculated Hours	Reported Hours
L70	≥238,000	>60,000
L80	≥149,000	>60,000
L90	≥71,000	>60,000

Project:	Catalogue #:	Type:
Notes:		

Mounting Kits

Part#		Description
KIT00292 (White) KIT00237 (Black)		48" Aircraft Cable & Canopy
KIT00293 (White) KIT00238 (Black)		5-Wire 18ga UNV Power Supply with 48" Aircraft Cable & Canopy
KIT00230 (White) KIT00253 (Black) [†]		6-Wire UNV Power Feed with 48" Air Craft Cable & Canopy (Emergency)
KIT00294 (White)		3-Wire 347V Power Feed with 48" Air Craft Cable & Canopy (Non-dimmable)
KIT00295 (White)		5-Wire 347V Power Feed with 48" Air Craft Cable & Canopy

Mounting Points



Tunable White

When Selecting 2765KT, if a tunable white-compatible control is not selected the luminaire will come standard with two sets of 0-10V wires for dimming and color tuning. For compatible control options please consult factory.

Dim and CCT control wire colors are subject to change without notice. All control wires are marked per the parentheses.

