

LHBI Output Selectable

LED - Commercial-Grade High or Low Bay Luminaire

| | | |
|----------|--------------|-------|
| Project: | Catalogue #: | Type: |
| Notes: | | |

Product Description

This LED luminaire is thermally designed for high bay applications and features field-selectable lumen outputs with various mounting options. Operating ambient temperature range is from -20°C to 55°C.

Applications

Manufacturing areas, Retail stores and supermarkets, Warehouse and distribution (not for freezers and areas of high humidity or condensation).



Features

- Selectable output
- Configurations up to 160 lm/W
- -20°C up to 55°C ambient (see ordering key)
- 80+ CRI Standard
- Standard low voltage dimming (0-10v)
- 2.5KV surge protection

Featured Options

- Emergency lighting battery pack
- Lenses available, see product key

Mounting

This luminaire is specifically designed for suspended mount applications, including stem, chain & adjustable aircraft cable. Mounting kits available (ordered separately).

Construction

CNC fabricated, code gauge steel housing and ends, with integral ventilation slots for high efficiency thermal management.

Finish

White, pre-painted housing.

Electrical

CSA/UL approved electronic components. Long life LEDs coupled with high efficiency drivers, provide quality illumination. Rated to deliver L80 performance for 60,000 hours.

Warranty

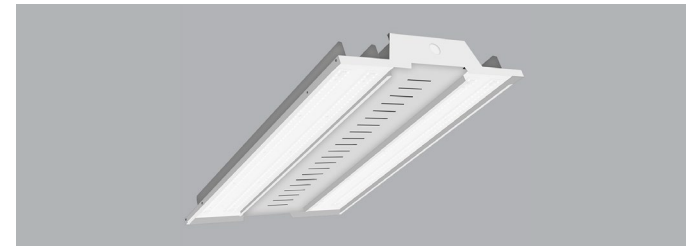
5 year limited warranty. For complete warranty, click here:



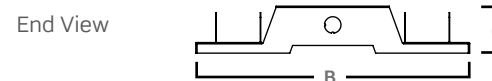
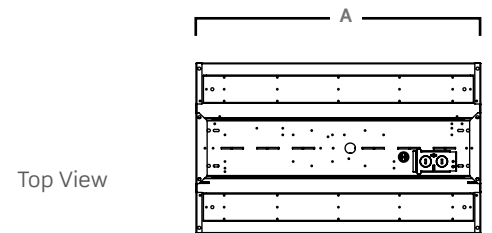
Approvals

- UL listed. cULus Listed
- Tested in accordance to IESNA LM-79.
- LEDs tested to IESNA LM-80.
- Suitable for damp locations.
- DesignLights Consortium® Premium (Pending).

All configurations may not be DLC qualified. Check www.designlights.org/QPL for qualified configurations.



Dimensions



| Size | A | B | C |
|------|-----|-------|------|
| 24 | 24" | 14.5" | 2.5" |

Consult installation guide for exact dimensions.

LHBI Output Selectable

LED - Commercial-Grade High or Low Bay Luminaire

| | | |
|----------|--------------|-------|
| Project: | Catalogue #: | Type: |
| Notes: | | |

Order Key

| Item | Catalogue No. | Voltage | Option |
|-------|------------------------------------|-------------------|---------------------------|
| 83453 | LHBI24-LED840K120/135/150LSUN3 | 120-347V (UN3) | |
| 83455 | LHBI24-LED840K240/275/300LSUN3 | | |
| 83457 | LHBI24-LED850K120/135/150LSUN3 | | |
| 83459 | LHBI24-LED850K240/275/300LSUN3 | | |
| 83454 | LHBI24-LED840K120/135/150LSUN3-B39 | | Emergency Battery Pack |
| 83456 | LHBI24-LED840K240/275/300LSUN3-B39 | | |
| 83458 | LHBI24-LED850K120/135/150LSUN3-B39 | | |
| 83460 | LHBI24-LED850K240/275/300LSUN3-B39 | | |

| Mounted Accessories (Ordered Separately) | |
|------------------------------------------|--------------------------------------------------------|
| KIT00460 | Frosted Lens Kit |
| KIT00461 | Wire Guard |
| KIT00002 | Speedy Hangers |
| KIT00003 | Mounting Stems & Canopy Set 3/8"IP (2) 4ft. |
| KIT00004 | Aircraft "Y" Cable (10ft) with Adjustable Grip (2) |
| KIT00016 | Deck Plate Ribbed Square |
| KIT00021 | Speedy Hangers with 48-in. Chain Set (2) |
| KIT00062-(3/4) | Mounting for 3/4-in. Threaded pipe (Stem not Included) |
| KIT00062-(1/2) | Mounting for 1/2-in. Threaded pipe (Stem not Included) |
| KIT00062-(3/8) | Mounting for 3/8-in. Threaded pipe (Stem not Included) |

Performance Scaling Factor

| | 50K | 40K | 35K | 30K |
|-------|-------|-------|-------|-------|
| 80CRI | 1.000 | 1.000 | 0.960 | 0.946 |

Lifetime Expectancy

| | Calculated Hours | Reported Hours |
|-----|------------------|----------------|
| L70 | ≥238,000 | >60,000 |
| L80 | ≥149,000 | >60,000 |
| L90 | ≥71,000 | >60,000 |

Delivered Lumens

| Size | Configuration | | No Lens | | KIT00460 | | Wattage | Max Ambient | |
|------|---------------|----------------|---------|-------|----------|-------|---------|-------------|---------|
| | Catalogue No | Nominal Lumens | Lumens | lm/W | Lumens | lm/W | | With Lens | No Lens |
| 224 | 120/135/150 | 12000 | 12801 | 160.0 | 10985 | 137.3 | 80 | 55 | 55 |
| | | 13500 | 14194 | 157.4 | 12142 | 134.6 | 90.2 | 55 | 55 |
| | | 15000 | 15812 | 153.8 | 13582 | 132.1 | 102.8 | 50 | 55 |
| | 240/275/300 | 24000 | 25791 | 159.1 | 21859 | 134.8 | 162.1 | 50 | 55 |
| | | 27500 | 28657 | 156.3 | 23885 | 130.3 | 183.3 | 45 | 50 |
| | | 30000 | 31387 | 153.3 | 26431 | 129.1 | 204.8 | 40 | 45 |

NOTE: Lumens and wattage based on 80CRI 4000K CCT at 25 Degrees Celsius

