

Project:	Catalogue #:	Type:
Notes:		

Product Description

Specification-grade, surface or pendant-mounted bi-directional luminaire. For use with indoor applications where low-glare, high-quality and ease of installation are required. Row-mounting capability. This surface or pendant-mount luminaire comes with a single basket-shaped perforated metal shield with an integrated metal crossblade baffle. Ideal for use in a converted industrial space.

Applications

Boardrooms, Corridors, Retail Stores and Supermarkets, Studio Lofts



Features

- Single, basket-shaped perforated metal shield with an integrated metal crossblade baffle
- Standard low voltage dimming (0-10v)
- Suitable for row-mounting
- Parabolic reflector design
- Surface, stem, or suspended mounting

Featured Options

- Emergency Lighting Battery pack
- Aircraft cable
- Speedy hangers
- Stem and canopy sets
- Mounting suspension set

Optical System

Basket shield is perforated with an integrated metal crossblade baffle for direct/indirect illumination and contains a white opal acrylic overlay diffuser for visual comfort. Indirect reflectors are precision formed and contoured to provide soft, low-glare, indirect illumination, while maintaining high-efficiency and a wide uniform light distribution.

Mounting

Knock-outs are provided for stem-mounting. Mounting holes are provided. Optional aircraft cable assemblies and canopy sets are available. Optional V (Speedy) hangers accommodate chain (not provided).

Construction

Die and brake-formed, heavy-gauge steel housing assembly. Die-formed, perforated cold rolled steel shielding. Precision-formed steel reflector.

Finish

White polyester powder painted visible surfaces.

Electrical

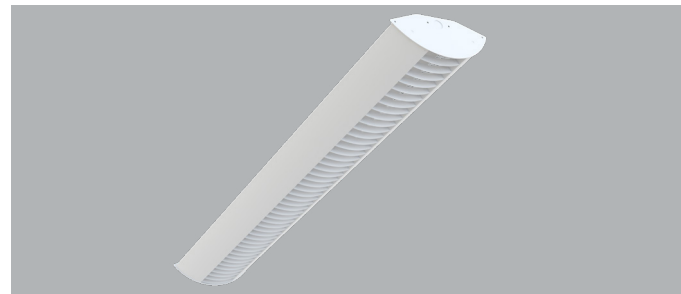
Long life LEDs coupled with high efficiency drivers provide quality illumination. Rated to deliver L80 performance > 50,000 hours.

Warranty

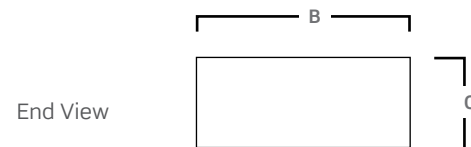
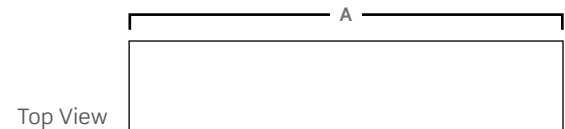
5 year limited warranty. For complete warranty, click here: 

Approvals

- Approved to CSA/UL standards.
- Suitable for damp locations



Dimensions



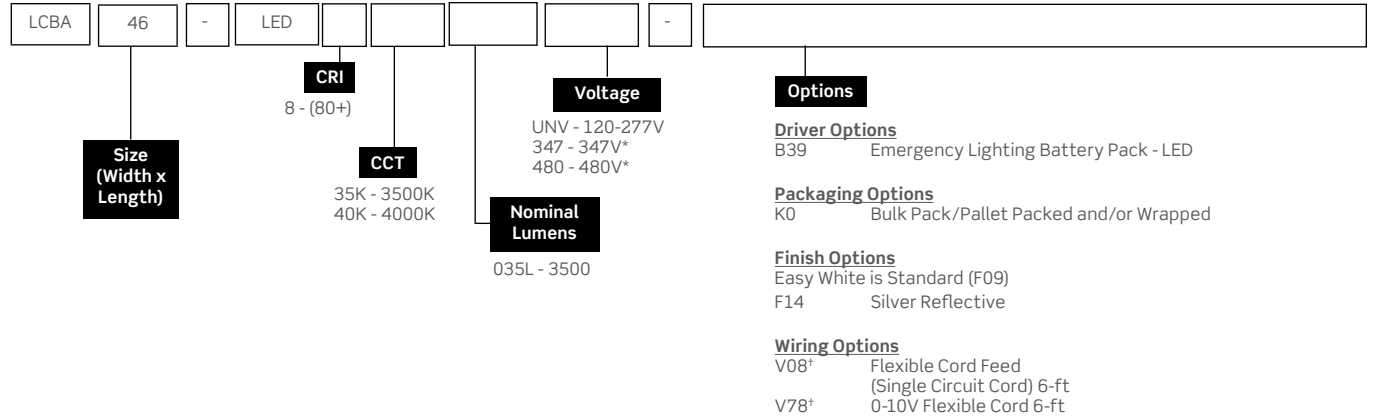
Size	A	B	C
46	46 1/8"	10 1/4"	4 1/16"

Consult installation guide for exact dimensions.

Project:	Catalogue #:	Type:
Notes:		

Order Key

EXAMPLE: LCBA46-LED840K035LUNV



* Consult factory for availability.
 * For pendant mounted applications only. Not for use in surface mount applications.

Other options may be available, consult factory. Specifications and data subject to change without notice.

Performance Data

LED Performance Data				
Size	Nominal Lumens	Delivered Lumens	Watts	Lumens Per Watt
46	3500	3516	26.5	132.9

Values based on 840K with standard lens at 25C

Performance Scaling Factor

	50K	40K	35K	30K
80CRI	1.000	1.000	0.960	0.946
90CRI	0.875	0.875	0.836	0.809

Mounted Accessories (Ordered Separately)	
KIT00002	Speedy Hangers (2).M23
KIT00003	Stem & Canopy Set 3/8"IP (2) 4ft.M26
KIT00021	Mounting Suspension Set (Speedy Hangers/48" Chains).M30
KIT00043	Aircraft Cable & Canopy Set (2) 4ft.M48 (Cord not included with the kit)
KIT00044	Stem & Canopy Set Sloped Ceilings (2) 3ft.M29
KIT00045	Stem & Canopy Set Sloped Ceilings (2) 4ft.M29
KIT00046	Stem & Canopy Set Sloped Ceilings (2) 6ft.M29
KIT00047	Stem & Canopy Set 3/8"IP (2) 2ft.M26
KIT00048	Stem & Canopy Set 3/8"IP (2) 1ft.M26
KIT00050	Stem & Canopy Set 3/8"IP (2) 3ft.M26
KIT00053	Stem & Canopy Set 3/8"IP (2) 6ft.M26