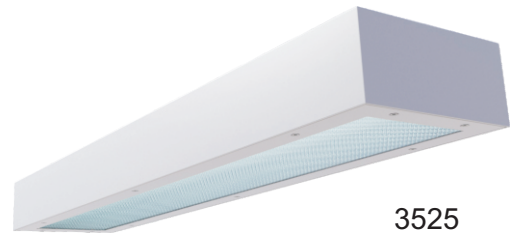


Project	
Type	
Date	
Product Code	
Approved by	

VRIS 1x2,1X4 - Confinement

Surface Mount Luminaire
T5, T5HO, T8 Lamps
(Cells, Corridors, Dayrooms)



3525

Product Specifications - Application

The VRIS1X4 series by Certolux is a specification-grade luminaire for maximum security and vandal resistant applications. The design incorporates a concealed hinge, tamper resistant fasteners and security lenses. This maximizes impact resistance and unauthorized fixture tampering/penetration. The luminaire can be ceiling surface mounted and is available in 1x2 and 1x4 configurations.

Product Specifications

Housing

Precision die formed 14, 16, or 18 gauge premium grade material as specified (see product ordering key) with continuously welded corners.

Door Frame

Single piece precision die formed with specified material (see product ordering key). Corners are seam welded. Tamper resistant TORX® Head with center pin fasteners secure door frame to housing.

Hinge

Full length concealed piano style hinge with .500" knuckle and .125" pin (Pin is secured to knuckle) welded to door frame and fastened to backplate.

Lens and Lens Retention

Multiple lens choices for both fixture side and room facing side (see product ordering key for options). Lens maximum thickness .500". The lens is secured with adjustable Z style brackets with through studs on housing faceplate.

Finish

The luminaire is in a powder painted white finish and offers a high reflectivity coating for improved lighting performance and efficiency.

Electrical

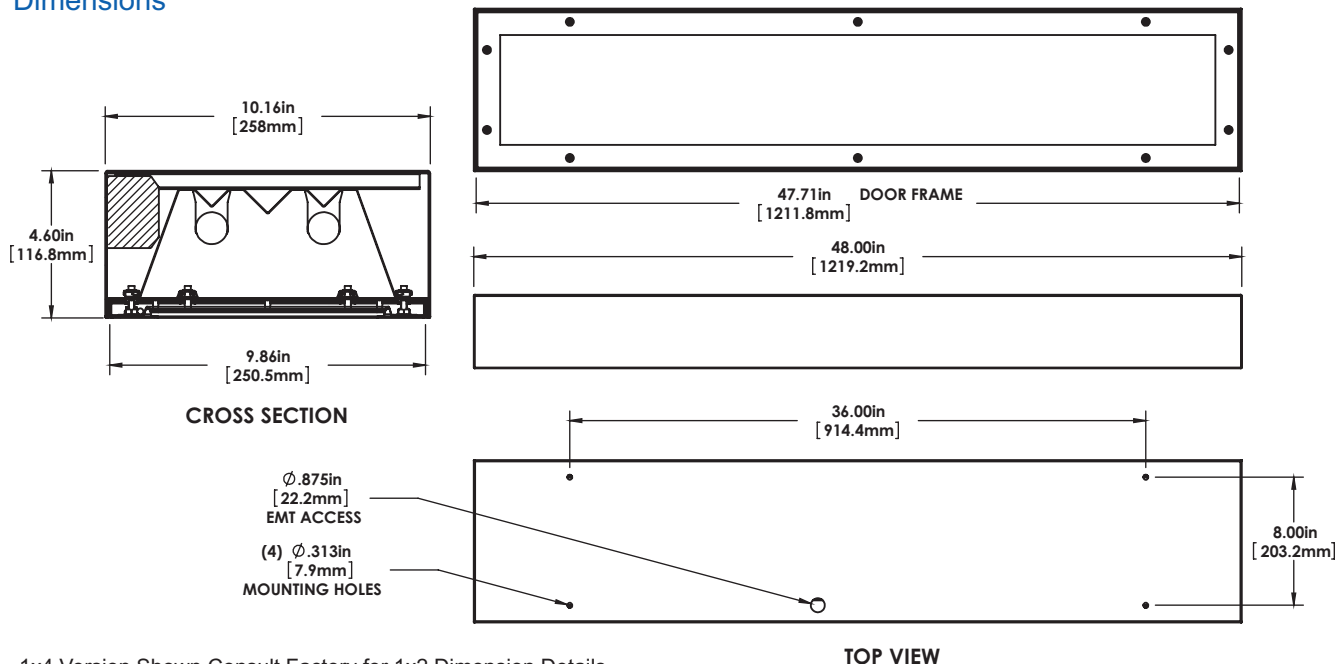
All electrical components are CSA or UL approved. Lamp holders provided ensure positive lamp retention. Standard electronic ballasts are programmed or rapid start, with a THD of less than 20%. Luminaires are provided with an access plate, to facilitate wiring to external power source.

Approvals

CSA and UL listed Damp Location. Optional IP55 rating (see ordering key).

Vandal Resistant

Dimensions

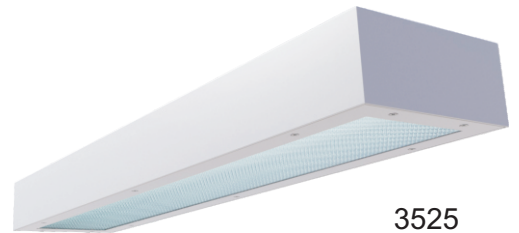


1x4 Version Shown Consult Factory for 1x2 Dimension Details

Project	
Type	
Date	
Product Code	
Approved by	

VRIS 1x2,1X4 - Confinement

Surface Mount Luminaire
T5, T5HO, T8 Lamps
(Cells, Corridors, Dayrooms)



3525

Product Specifications - Application

The VRIS1X4 series by Certolux is a specification-grade luminaire for maximum security and vandal resistant applications. The design incorporates a concealed hinge, tamper resistant fasteners and security lenses. This maximizes impact resistance and unauthorized fixture tampering/penetration. The luminaire can be ceiling surface mounted and is available in 1x2 and 1x4 configurations.

Ordering

VRIS-3525			/		-				-		/				
Series	Model	Size (W x L)		No. of Lamps	Lamp Type	Voltage	Internal Lens	External Lens	Options						
		1x2 1x4		1L 2L 3L	T5 T5HO T8	120 - 120V 277 - 277V 347 - 347V UNV - 120-277V			<u>Ballast Options</u>						
						Ballast Type			<input type="checkbox"/> B01 Ballast Disconnect - In-line Power Disconnect (CSA-UL Req'd For Voltages above 150v)						
						N - Instant Start P - Prog. Start			<input type="checkbox"/> B02 Dimming Addressable Digital (DALI)						
									<input type="checkbox"/> B03 Dimming Low Voltage						
									<input type="checkbox"/> B08 Ballast - High Ballast Factor						
									<input type="checkbox"/> B09 Ballast - Low Ballast Factor						
									<input type="checkbox"/> B30 Emergency Specified Lighting Battery Pack 1-lamp						
									<input type="checkbox"/> B33 Emergency Lighting Battery Pack 1-lamp						
									<input type="checkbox"/> B34 Emergency Lighting Battery Pack 2-lamp						
									<u>Construction Options</u>						
									<input type="checkbox"/> C29 Housing Wet Location						
									<u>Packaging Options</u>						
									<input type="checkbox"/> K0 Pack Bulk/Pallet Packed and/or wrapped						
									<input type="checkbox"/> K1 Pack Single						
									<u>Mounting Options</u>						
									<input type="checkbox"/> M26 Stem and Canopy kit 3/8 IP Length to be advised (xx)						
									<u>Fusing and Breaker Options</u>						
									<input type="checkbox"/> T5 Fuseholder, In-line Double Pole						
									<input type="checkbox"/> T6 Fuseholder, In-line Single Pole						
									<u>Wiring Options</u>						
									<input type="checkbox"/> V22 Night Light - Compact Fluorescent						
									<input type="checkbox"/> V25 Radio Frequency Filter						
									<input type="checkbox"/> V39 Night Light - White LED						
									<u>Reflector Options</u>						
									<input type="checkbox"/> VF1 Full (95% Reflectance) Specular						
									<u>Approvals Options</u>						
									<input type="checkbox"/> X7 Dual CSA/USA						
									<input type="checkbox"/> X12 IP55 rated						
									<u>Lamp Options</u>						
									<input type="checkbox"/> Z1 Lamps Installed (Specify Type)						

Vandal Resistant

- Door/Housing Gauge**
- A - 18 Ga. CRS (Painted)
 - B - 16 Ga. CRS (Painted)
 - C - 14 Ga. CRS (Painted)
 - E - 18 Ga. SS #304 (Painted)
 - F - 16 Ga. SS #304 (Painted)
 - G - 14 Ga. SS #304 (Painted)
 - J - 16 Ga. SS #304 (#4 Brushed)**
 - K - 14 Ga. SS #304 (#4 Brushed)**

Lamp Watts
See Table below

- Internal/External Lens**
- P00 - None
 - P13 - .125 Prismatic Acrylic
 - P45 - .125 Clear Polycarbonate
 - P42 - .156 Prismatic Polycarbonate
 - P43 - .187 Prismatic Polycarbonate
 - P46 - .187 Clear Polycarbonate
 - P49 - .187 Clear Tempered Glass
 - P08 - .250 Clear Polycarbonate
 - P50 - .250 Clear Tempered Glass
 - P47 - .375 Clear Polycarbonate
 - P51 - .375 Clear Tempered Glass
 - P48 - .500 Clear Polycarbonate
 - P52 - .500 Clear Tempered Glass
 - P74 - .005 UV Overlay

** Not Available as Housing Material

Note: Maximum lens thickness combined is .625"

Model Numbers relate to specific designs, refer to product photo and Dimension sections for additional details.

Size	Nom. Lamp Watts		
	T5	T5HO	T8
1x2	14	24	17
1x4	28	54	32

+ T5HO Lamps only

Other options may be available consult factory. Specifications and data subject to change without notice

