

Project
Type
Date
Cat #

Application Features

Premium-grade, low-profile strip luminaire. For use with a remote ballast in indoor applications where compact design, high-performance and ease of installation are primary considerations. This luminaire's ultra-shallow design and flush-mounting surface makes it ideal for use in display cabinets.



Specifications

Optical System

Optional reflectors are available with 1/2 reflector or asymmetric cutoffs, in white and specular aluminum with a minimum reflectance of 95%.

Mounting

Mounting holes are provided. Flush mounting surface contains no offsets or exposed fastener heads.

Construction

CNC brake-formed code gauge steel. One-piece folded construction.

Finish

Pre-painted, high-reflectance white housing.

Electrical

Rotary lampholders ensure positive lamp retention. Sufficient knockouts are provided for connections and through wiring.

Approvals

Approved to CSA and UL standards.

Features

- Ultra-slim design
- Complete with remote ballast box
- Flush mounting surface - no offsets
- Available in T8 configurations

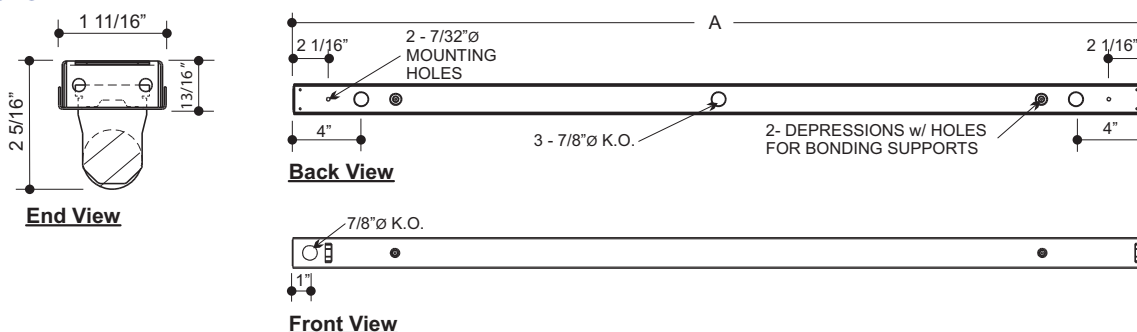
Options & Adders

- Asymmetric, half or full reflector available in white or enhanced specular aluminum with a reflectance of 95%
- Dimmable and Emergency ballast
- Remote ballast box
- In-line fuse holder
- Individual and custom packaging (select models only)

Applications

- Coves
- Display Cabinets
- Retail Stores and Supermarkets
- Work Stations

Dimensions



MODEL	Nominal Length	A (in.)
124	24	26 1/16
136	36	38 1/16
136/2	72	74 1/16
148	48	50 1/16
148/2	96	98 1/16
160	60	62 1/16

