

Project
Type
Date
Cat #

Application Features

Specification-grade, recessed, lay-in T-Bar luminaire with door frame. For use with indoor applications where high-efficiency, high-performance and ease of installation are required. Metric versions available.



Specifications

Optical System

Standard diffuser is a clear, prismatic pattern #12, acrylic lens. Optional shielding is available. Optional reflectors are available in specular aluminum with a minimum reflectance of 95%.

Mounting

Holes provided for chain-mounting support to building structure. Lay-in type luminaire for exposed grid type acoustical ceiling structure.

Construction

Die-formed, code gauge pre-painted, white steel. Access plate for quick wiring. Ballast cover snaps into place eliminating the need for tools when accessing the ballast. Diffuser is held within a hinged door frame. The heavy-gauge door frame hinges downward on either side, and is held in the closed position by two positive cam latches.

Finish

Pre-painted, high-reflectance white housing.

Electrical

Rotary lampholders ensure positive lamp retention. Sufficient knockouts are provided for connections and through wiring.

Approvals

Approved to CSA and UL standards.

Features

Available with 1, 2, 3, 4 or 6 lamps (T5, T8 and PLL/Biax configurations)

Available in 1 x 4, 2 x 2 and 2 x 4 configurations

Metric versions available

Access plate for quick wiring

Heavy-duty construction

Integral earthquake clips

Die-formed steel pin hinges on either side

Options & Adders

Multi-level switching

Dimmable and Emergency ballast

Radio interference filter (120V - 277V)

Drywall flange kits available

Regressed aluminum door frame

20 gauge riveted construction

Light leak gasketing

Applications

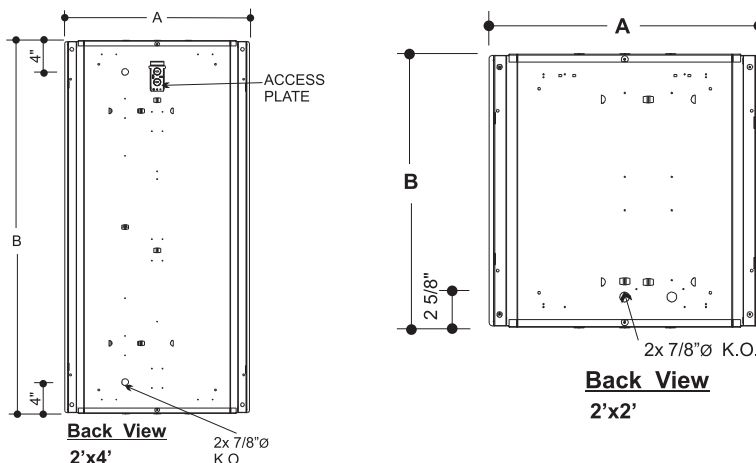
Classrooms

Hospitals

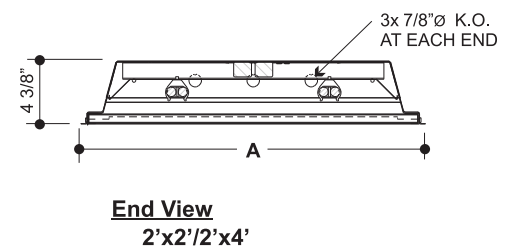
Office Areas

Retail Stores and Supermarkets

Dimensions



MODEL	A	B
1'x4'	11 3/4"	47 3/4"
2'x2'	23 3/4"	23 3/4"
2'x4'	23 3/4"	47 3/4"



Project
Type
Date
Cat #

MRCTB Magic Recessed T-Bar

Specification-Grade Recessed Static T-Bar Luminaire



Photometrics

Ordering

MRCTB			-				-		Options
-------	--	--	---	--	--	--	---	--	---------

Size (Width x Length)	No. of Lamps	Lamp Watts See Table below	Voltage
1x4 300x1200 2x2 600x600 2x4 600x1200	1L 2L 3L 4L 6L	Lamp Type T5 T5HO T8 T8U2 T8U6 PLL	120 - 120V 347 - 347V UNV - 120-277V UN4 - 347-480V
		Ballast Type N - Instant Start P - Program Start R - Rapid Start	

Ballast Options

(See Option Code Section For More Information)

- ☐ B02 Dimming Addressable Digital (dali)
- ☐ B03 Dimming Low Voltage (0-10v)
- ☐ B04 Dimming Line Voltage
- ☐ B08 Ballast - High Ballast Factor
- ☐ B09 Ballast - Low Ballast Factor
- ☐ B30 Emergency Lighting Battery Pack Specification Grade
- ☐ B33 Emergency Lighting Battery Pack 1-lamp
- ☐ B34 Emergency Lighting Battery Pack 2-lamp

Housing Construction Options

- ☐ C06 Housing 20 Gauge Riveted

Door Frame Options

- ☐ D2 Door Frame Regressed Aluminum

Gasket Options

- ☐ G2 Gasket Light Leak

Finish Options

- ☐ F02 Post Powder Painted (White)

Packaging Options

- ☐ K0 Pack Bulk/ Pallet Packed and/or Wrapped

Louver Options

(in place of lens, select one)

- ☐ L11 Louver 1/2 X 1/2 X 3/8 White Eggcrate Acrylic

Lens and Shielding Options (select one only)

(Pattern 12 Prismatic Acrylic is Standard)

- ☐ P04 Opal Smooth Acrylic Lens
- ☐ P05 Clear Acrylic Lens - .08" Thick
- ☐ P07 Clear Polycarbonate Lens
- ☐ P13 Prismatic Acrylic - P12 .125" thick
- ☐ P16 Prismatic Polycarbonate Lens
- ☐ P45 Clear Polycarbonate Lens - .125" Thick

Reflector Options

- ☐ VF1 Reflector VF1 Specular (95% Reflectance) Aluminum

Fusing and Breaker Options (select one only)

- ☐ T5 Fuseholder, In-line Double Pole
- ☐ T6 Fuseholder, In-line Single Pole

Wiring Options

- ☐ V08 Flexible Feed Cord (single circuit only)
- ☐ V09 Flexible Whip (standard 6' X 3-18 Ga.)
- ☐ V17 Master / Slave Wiring Master Unit (contains Ballasts)
- ☐ V18 Master / Slave Wiring Slave Unit (contains No Ballast)
- ☐ V19 Modular Wiring System. (consult Factory.)
- ☐ V25 Radio Frequency Filter

Approval and Rating Options

- ☐ X7 Dual CSA and USA Markets

Lamp Options

- ☐ Z1 Lamps installed (specify type)

Note: For recessed drywall applications use either a 1x4, 2x2 or 2x4 flange kit.

Example:

MRCTB2x44L-T832N120

Lamp Watts

Size	Nominal Lamp Watts					
	T5	T5HO	T8	T8U2	T8U6	PLL/ Biax
1x4 (300x1200)	28 (1, 2 or 3 lamps)	54 (2, 3 or 4 lamps)	32 (1, 2 or 3 lamps)			
2x2 (600x600)	14 (2, 3, 4 or 6 lamps)	24 (2, 3, 4 or 6 lamps)	17 (2, 3 or 4 (2 lamp)	31 (2 lamp)	32 (2 lamp)	40, 50, 55 (2, 3, 4, 5 or 6 lamps)
2x4 (600x1200)	28 (2, 3, 4 or 6 lamps)	54 (2, 3, 4, or 6 lamps)	32 (2, 3, 4 or 6 lamps)			

Other options may be available consult factory.
Specifications and data subject to change without notice.