



Project
Type
Date
Cat #

Application Features

Premium-grade, fluorescent strip luminaire. Socket bar flips up for easy installation when converting to raceway for continuous row-mounting. It is ideal in wide general areas where increased light distribution is required. For use with indoor applications where low-cost, but industrial-grade ruggedness is required. Available in nominal lengths from 24 to 96 inches.

Specifications

Optical System

Standard reflectors are solid and are coated with a durable, high-reflectance white finish. Optional reflectors are available with 1/2 reflector or asymmetric cutoffs, in white and specular aluminum with a minimum reflectance of 95%.

Mounting

Mounting holes are provided. This product can be surface, chain or stem-mounted.

Construction

Die and brake-formed, code gauge, pre-painted white steel. Screw-fastened end plates can be repositioned to serve as joiners for continuous row-mounting, thus forming a continuous, uninterrupted wireway (on non-welded units and on units over 24 inches only). Single-piece reflector on non-tandem units.

Finish

Pre-painted, high-reflectance white housing.

Electrical

Rotary lampholders ensure positive lamp retention. Sufficient knockouts are provided for connections and through wiring.

Approvals

Approved to CSA and UL standards.

Features

- Available with 2, 3 or 4 lamps (T5, T8 and T12 configurations)
- Single-piece reflectors
- Continuous raceway and row-mounting capability
- Surface, stem, or chain mountable
- Available in lengths from 24 to 96 inches
- Flip-up socket bars

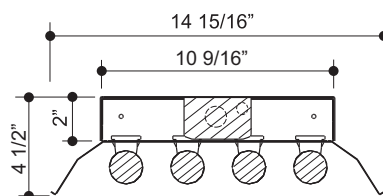
Options & Adders

- Multi-level switching
- Dimmable and Emergency ballast
- Heavy-duty wireguards with powder coated white finish or zinc plated comes with mounting hardware
- Aligner clips for row-mounting
- In-line fuse holder
- Pull chain switch

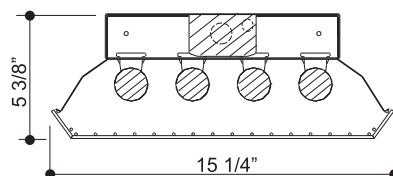
Applications

- Garages and Workshops
- Manufacturing and Warehouse Areas
- Storage Rooms
- Utility Areas

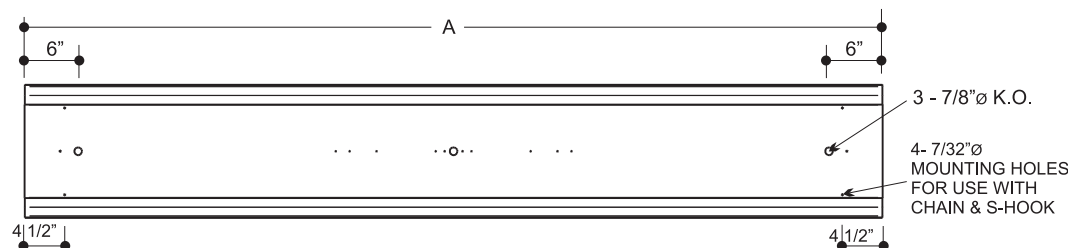
Dimensions



Cross Sections



With Wireguard



Back View

MODEL	LENGTH A (in.)
424	24
436	36
436/2	72
448	48
448/2	96
472	72
496	96

Project
Type
Date
Cat #

IND4 Industrial Four Lamp

Premium-Grade Four Lamp Fluorescent Strip Luminaire



Photometrics - Please consult www.viscor.com for photometric results.

Ordering

IND				-					-			Options
Typical Number of lamps in Cross Section 4					Lamp Watts See table below		Voltage 120 - 120V 347 - 347V UNV - 120-277V		No. of Lamps Option (in Cross Section) (Blank) - N/A 2L - 2 lamp 3L - 3 Lamp			
	Nom. Length (in.) 24 36 48 60 72 96				Lamp Type T5 T5HO T8 T8HO T12SL T12HO		Ballast Type N - Instant Start P - Program Start R - Rapid Start					
				Tandem (Blank) - N/A /2 - Single Housing								

Ballast Options

(See Option Code Section For More Information)

- ☐ B02 Dimming Addressable Digital (dali)
- ☐ B03 Dimming Low Voltage (0-10v)
- ☐ B04 Dimming Line Voltage
- ☐ B08 Ballast - High Ballast Factor
- ☐ B09 Ballast - Low Ballast Factor
- ☐ B30 Emergency Lighting Battery Pack Specification Grade
- ☐ B33 Emergency Lighting Battery Pack 1-lamp
- ☐ B34 Emergency Lighting Battery Pack 2-lamp

Packaging Options (select one only)

- ☐ K0 Pack Bulk/ Pallet Packed and/or Wrapped
- ☐ K1 Pack Single

Mounting Options

- ☐ M10_(xxx) Chain Set (48-Inch Standard)
(Specify length in inches)
- ☐ M20 Mounting Row Aligner Clip

Reflector Options (select one only)

(solid full white is standard)

- ☐ R03 Reflector Slotted Full White
- ☐ R04 Reflector Solid 1/2 White
- ☐ R06 Reflector Solid Asymmetrical White
- ☐ VF1 Reflector VF1 Solid Full
(95% Reflectance) Specular
- ☐ VF2 Reflector VF1 Solid 1/2
(95% Reflectance) Specular
- ☐ VF3 Reflector VF1 Slotted Full
(95% Reflectance) Specular
- ☐ VF4 Reflector VF1 Solid Asymmetric
(95% Reflectance) Specular

Switch Options (select one only)

- ☐ S1 Switch Pull-chain
- ☐ S5 Switch Toggle
- ☐ S6 Switch Turn

Fusing and Breaker Options (select one only)

- ☐ T5 Fuseholder, In-line Double Pole
- ☐ T6 Fuseholder, In-line Single Pole

Wiring Options

- ☐ V02 Convenience Outlet
- ☐ V05 Cord and Plug Three Wire
- ☐ V08 Flexible Feed Cord
(single circuit only)
- ☐ V33 Wiring 2-Switch Leads

Wireguard Options (select one only)

- ☐ W1 Heavy Duty Painted Wireguard
- ☐ W2 Heavy Duty Zinc Plated Wireguard

Approval and Rating Options

- ☐ X7 Dual CSA and USA Markets

Example:

IND448-T832N120-VF1S1

Lamp Watts

Length	Nominal Lamp Watts				Lamp Length (in)	
	T5	T5HO	T8	T8HO	T12SL	T12HO
24	-	-	17	-	-	-
36	-	-	25	-	-	-
48	28	54	32	44	-	-
72			-	65	72	72
96			59	86	96	96

Other options may be available consult factory.
Specifications and data subject to change without notice.