

Project
Type
Date
Cat #

Application Features

Specification-grade, wall-mounted valance luminaire. For use with indoor applications where low-glare, high-quality and ease of installation are required. This luminaire has been designed as a bedlight for hospitals, nursing homes and other patient care facilities. Its internal baffle separates uplight and downlight components.



Specifications

Optical System

Standard diffuser is a clear, prismatic acrylic designed for even and low-glare illumination. A dedicated wall switch (provided by others) or a pull chain (S1) must be present to control both the incandescent or compact fluorescent night light option on this luminaire. Internal fascia is coated white in order to improve efficiency. Internal baffle separates uplight and downlight components.

Mounting

Mounting holes are provided. Mounts over electrical junction box.

Construction

Die and brake-formed, heavy-gauge steel housing assembly. Spot-welded for rigidity and clean appearance. Diffuser is retained by a grooved formation running the length of the fixture and is held in place on both ends by the end caps. Metal fascia retained flush against the diffuser by the end caps.

Finish

High-reflectivity coated reflecting surfaces for improved efficiency.

Electrical

Rotary lampholders ensure positive lamp retention. Sufficient knockouts are provided for connections and through wiring.

Approvals

Approved to CSA and UL standards.

Features

- Heavy-duty construction
- Metal fascia
- Available with 2, 3 or 4 lamps (T5 and T8 configurations)
- Clear, linear prismatic, acrylic single piece diffuser

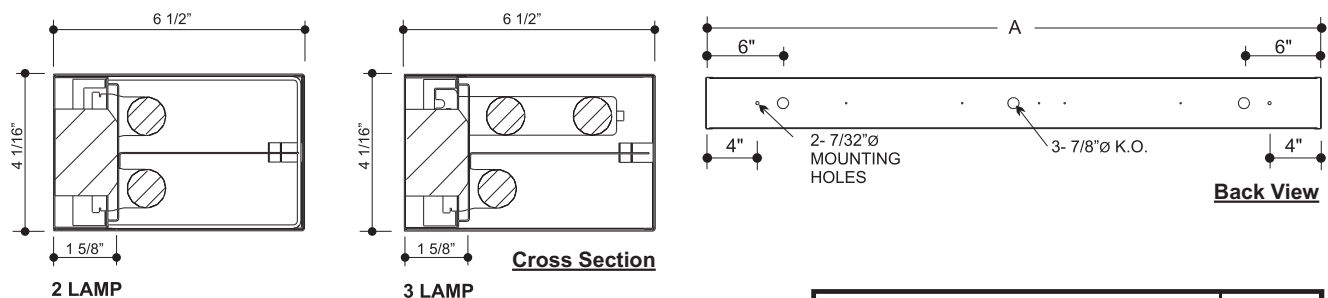
Options & Adders

- Dimmable and Emergency ballast
- Radio interference filter (120V - 277V)
- Three-way pull chain switch
- Pull chain switch
- Convenience outlet
- Night light w/switch- incandescent or compact fluorescent

Applications

- Chronic Care Facilities
- Hospitals
- Nursing Homes

Dimensions



MODEL				A (In.)
1 UP 1 DOWN	2 UP 1 DOWN	1 UP 2 DOWN	2 UP 2 DOWN	
11-24	12-24	21-24	22-24	24 1/16
11-36	12-36	21-36	22-36	36 1/16
11-48	12-48	21-48	22-48	48 1/16

