



Project
Type
Date
Cat #

## Application Features

Premium-grade, low-profile T5 fluorescent strip luminaire to be used with a remote ballast. For use with indoor applications, where compact design, high-performance and ease of installation are required (such as display cabinets).

## Specifications

### Optical System

Optional reflectors are available with 1/2 reflector or asymmetric cutoffs, in white and specular aluminum with a minimum reflectance of 95%.

### Mounting

Mounting holes are provided. Flush mounting surface contains no offsets or exposed fastener heads.

### Construction

Die and brake-formed, code gauge, pre-painted white steel. One-piece folded construction.

### Finish

Pre-painted, high-reflectance white housing.

### Electrical

Rotary lampholders ensure positive lamp retention. Sufficient knockouts are provided for connections and through wiring.

### Approvals

Approved to CSA and UL standards.

## Features

- Ultra-slim design
- Flush mounting surface - no offsets
- Complete with remote ballast box
- Available in T5 configurations

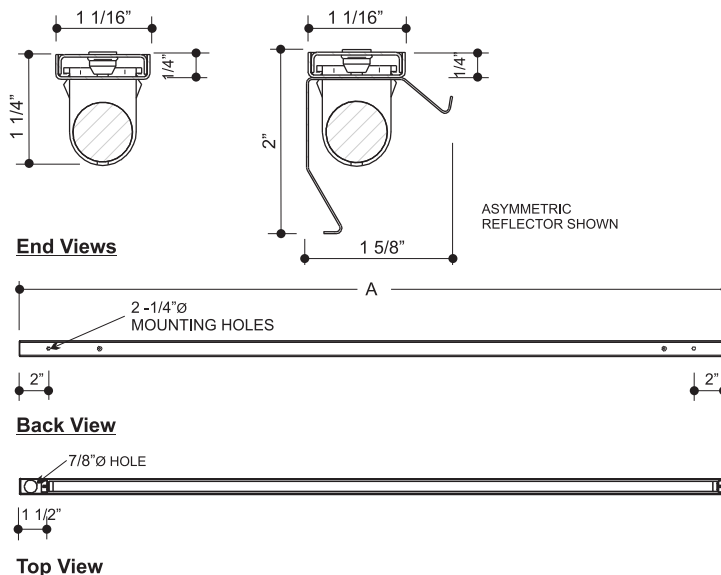
## Options & Adders

- Asymmetric, half or full reflector available in white or enhanced specular aluminum with a reflectance of 95%
- Dimmable and Emergency ballast
- Individual and custom packaging (select models only)

## Applications

- Display Cabinets
- Retail Stores
- Work Stations

## Dimensions



MODEL	NOMINAL LAMP WATTAGE	NOMINAL LENGTH (in.)	A (in.) OVERALL LENGTH
<b>PREHEAT T5</b>			
109	6W	9	10 9/16
112	8W	12	13 5/8
121	13W	21	22 1/2
<b>ADVANCED T5 TECHNOLOGY</b>			
122	14W/24W	22	23 7/8
134	21W/39W	34	35 11/16
146	28W/54W	46	47 1/2
158	35W/49W/80W	58	59 5/16

