

Project
Type
Date
Cat #

Application Features

Specification-grade, staggered fluorescent strip luminaire. For use with indoor applications where continuous uniform row lighting without "socket-end" dark spots is desired (such as coves). Diagonally overlapped lamps create a more uniform lighting pattern than standard staggered luminaires.



Specifications

Mounting

Mounting holes are provided.

Construction

Die and brake-formed, code gauge, pre-painted white steel. Single wireway cover on non-tandem units. Sufficient knockouts are provided on ends and back to accommodate multiple mounting configurations.

Finish

Pre-painted, high-reflectance white housing.

Electrical

Rotary lampholders ensure positive lamp retention. Sufficient knockouts are provided for connections and through wiring.

Approvals

Approved to CSA and UL standards.

Features

- Heavy-duty construction
- Designed specifically for row-mounting
- Overlapping lamps eliminate "socket-end" dark spots
- Available in lengths from 22.5 to 60 inches
- Diagonally overlapped lamps create a more uniform lighting pattern than standard staggered luminaires
- Available in T5 and T8 configurations

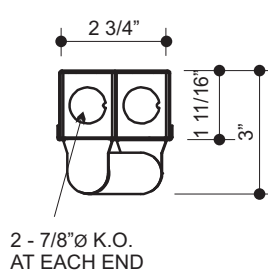
Options & Adders

- Asymmetric, half or full reflector available in white or enhanced specular aluminum with a reflectance of 95%
- Dimmable and Emergency ballast
- 20 gauge riveted construction
- In-line fuse holder

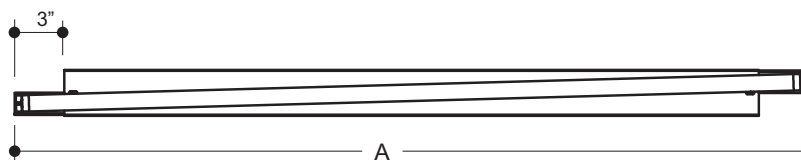
Applications

- Coves
- Valances
- Indirect Lighting

Dimensions



**T5/T8
End View**



Top View



Back View

MODEL	Lamp Type	NOMINAL LENGTH	ACTUAL LENGTH A (in.)
124	T5/T8	2'	24
136	T5/T8	3'	36
148	T5/T8	4'	48
160	T5/T8	5'	60

