

# CRIG-3558

LED Cleanroom Recessed Grid (t-bar) Inset Door

LED

CLEANROOM

**CERTOLUX**  
by VISCOR

Project:	Catalogue #:	Type:
Notes:		

## Product Description

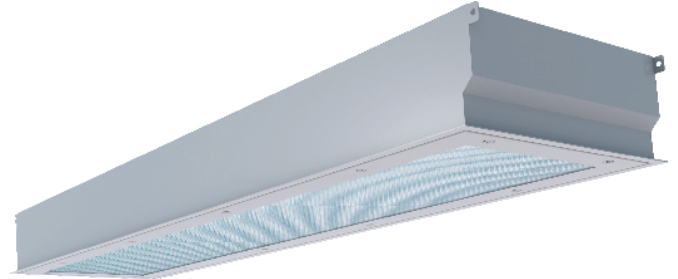
The CRIG series by Certolux is a specification-grade, LED recessed T-Bar, inset door, IC-rated Cleanroom luminaire, for ISO Class 5 - 8 Cleanrooms. Suitable for 2500psi Pressure spray down. For use in wet locations, insulated ceilings. NSF/ANSI 2 Food Zone, Splash Zone and Non-Food Zone Applications (see ordering key).

## Approvals

Approved to CSA and UL standards. UL listed for wet locations, insulated ceilings, IP65. NSF Listed (see ordering key).

## Featured Options

- Emergency LED Battery Pack
- White LED Night Light



## Housing

Precision formed, TIG welded, one piece 20 gauge cold rolled steel housing. Welded and PEM studs are used in order to mount components.

## Mounting

T-Bar mounted and supplied with tabbed holes for independent chain support.

## Door Frame

One piece door frame, fabricated from 18 gauge, cold rolled steel with TIG welded corners. It is retained by stainless steel aircraft cables. Specialized, military grade, flat head, stainless steel, captive fasteners with integral silicone o-rings easily secure door frame to housing through use of floating cage nuts. Silicone o-rings offer superior performance and longer life over comparable teflon bushings.

## Door Frame Gasket

The extruded silicone based gasket seals the door frame to the housing.

## Reflector

Painted white reflector is standard, optional VF1 reflectors are available which are made of specular anodized aluminum with a minimum reflectivity of 95% (see product ordering guide).

## Lens & Lens Retention

The lamp compartment is protected by a .125" pattern 12 lens. The lens is secured with adjustable Z style brackets with weld studs on housing faceplate. Lens is sealed to the door frame with silicone sealant. Other lens options available. (see product ordering guide)

## Finish

White, polyester powder painted housing.

## Electrical

Long life LED's coupled with high efficiency drivers provide quality illumination. Rated to deliver an L80 performance >50,000 hours. The standard driver has a THD of <10%. Standard low-voltage dimming (0-10v, 1%). All electrical components are CSA or UL approved. A 1/2" EMT hole is provided for wiring connections.

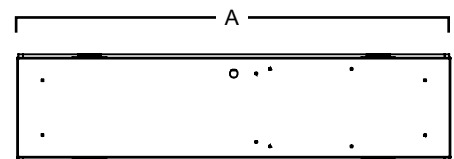
## Warranty

5 year limited warranty. For complete warranty terms visit:

[http://viscor.com/assets/Viscor\\_LED\\_Warranty.pdf](http://viscor.com/assets/Viscor_LED_Warranty.pdf)

## Dimensions

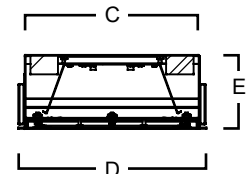
Top View



End View (Top)



End View (Side)



	A	B	C	D	E
1x4	48"	47.75"	10.95"	11.75"	4.53"
2x2	24"	23.75"	22.95"	23.75"	4.59"
2x4	48"	47.75"	22.95"	23.75"	4.53"

Consult installation guide for exact dimensions.



# CRIG-3558

LED Cleanroom Recessed Grid (t-bar) Inset Door

LED

CLEANROOM



Project:	Catalogue #:	Type:
Notes:		

## Order Key

**CRIG** - **3558** / **LED** **8** - **Options**

**Series** **Type** **Size (Width x Length)** **CRI** **CCT** **Voltage** **Door/Housing Gauge** **Nominal Lumens**

1x4  
2x2  
2x4

8 - (80-89)

30K - 3000 K  
35K - 3500 K  
40K - 4000 K  
50K - 5000 K

UNV - 120-277V  
347 - 347V

P - 20 Ga. CRS - Painted\*\*\*  
T - 20. Ga. SS #304 -Painted  
A - 18 Ga. CRS - Painted\*  
E - 18 Ga. SS #304 - Painted  
H - 18 Ga. SS #304 - #4 Brushed\*\*  
L - 18 Ga. SS #316 - Painted  
U - 16 Ga. (.050") Alum - Painted

\* Standard Door Frame Material  
\*\* Not Available as Housing Material  
\*\*\* Standard Housing Material

**Driver Options**  
B02 Dimming Addressable Digital (DALI)  
B39 Emergency Lighting Battery Pack - LED

**Housing Construction Options**  
C55 Housing for 1 1/2" T-Bar  
C57 Housing for 2" T-Bar

**Packaging Options**  
K0 Bulk Pack/Pallet Packed and/or Wrapped

**Lens Options**  
P56 Lens Clear Acrylic  
P45 .125 Clear Polycarbonate  
P13 Lens Prismatic Acrylic - P12 .125" Thick  
P16 .125 Prismatic Polycarbonate - P12  
P75 .125 Pattern 12 Acrylic Lens w/ EMI Grid  
P76 .125 Pattern 19 Acrylic Lens w/ EMI Grid  
P64 Symmetric/Asymmetric Acrylic Lens w/ EMI Grid  
P15 .140 Prismatic Polycarbonate - P12  
P11 Lens .156 Acrylic - P19  
P06 Lens Clear Glass Tempered  
P43 .187 Prismatic Polycarbonate - P12  
P14 Lens Clear Glass Tempered with Prismatic Acrylic Overlay  
P82 White Translucent Acrylic .080  
P73 Lens White Translucent Polycarbonate

Lumen & Watts

Size	Delivered Lumens	Watts
1x4	2600	25
	5200	47
	7800	75
	10400	98
2x2	2600	25
	3500	33
	5200	47
	6600	63
	7800	75
2x4	5200	47
	7800	75
	10400	98
	15000	147

Red LED Array - Lumen & Watts

Size	Rows of LED	Lumens	Watts
1x4	1	2045	54
	2	4090	108
2x2	1	1020	27
	2	2045	54
2x4	1	2045	54
	2	4090	108

### Fusing and Breaker Options

T6 Fuseholder, In-line Single Pole

### Wiring Options

V25 Radio Frequency Filter  
V39 Night Light - White LED  
V57 Sealed Wireway 90 degree connector w/10ft Liquid Type Flex 3/14Ga. Wire  
V80 LED Red array - One Row  
V81 LED Red array - Two Rows

### Reflector Options

VF1 Full (95% Reflectance) Specular

### Approval and Rating Options

X5 NSF (National Sanitation Foundation)  
X8 IP65 Rate

Other options may be available, consult factory. Specifications and data subject to change without notice.