

Project
Type
Date
Cat #

## Application Features

Premium-grade, fluorescent strip luminaire. For use with indoor applications where low-cost, but industrial-grade ruggedness is required. This luminaire's socket bar flips up for easy installation. Converts to raceway for continuous row-mounting.



## Specifications

### Mounting

Mounting holes are provided. This product can be surface, chain or stem-mounted.

### Construction

Die and brake-formed, code gauge, pre-painted white steel. Screw-fastened end plates can be repositioned to serve as joiners for continuous row-mounting, thus forming a continuous, uninterrupted wireway. Single wireway cover on non-tandem units. Flattened knockouts are provided on ends for conduit attachment.

### Finish

Pre-painted, high-reflectance white housing.

### Electrical

Rotary lampholders ensure positive lamp retention. Sufficient knockouts are provided for connections and through wiring.

### Approvals

Approved to CSA and UL standards.

## Features

- Available with 2, 3 or 4 lamps (T8 and T12 configurations)
- Available in lengths from 24 to 96 inches
- Flip-up socket bars

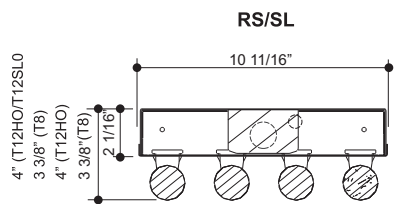
## Options & Adders

- Multi-level switching
- Dimmable and Emergency ballast
- Heavy-duty wireguards with powder coated white finish comes with mounting hardware
- 20 gauge riveted construction
- Aluminum construction
- Convenience outlet
- Pull chain, Toggle and Turn switch

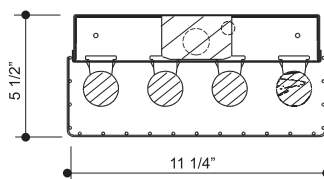
## Applications

- Storage Areas
- Manufacturing Areas and Warehouse Areas
- Parking Garages
- Stairwells
- Utility Areas
- Valances
- High Illumination Task Lighting

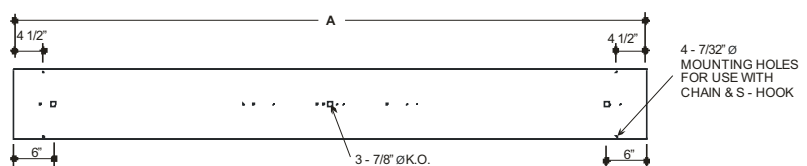
## Dimensions



### With Wireguards



### Cross Sections



MODEL	LENGTH A (in.)
424	24
436	36
436/2	72
448	48
448/2	96
472	72
496	96

