

Project
Type
Date
Cat #

Application Features

Premium-grade, fluorescent strip luminaire. For use in indoor applications where low-cost, but industrial-grade ruggedness is required. This luminaire's socket bar flips up for easy installation. Converts to raceway for continuous row-mounting.



Specifications

Mounting

Mounting holes are provided. This product can be surface or stem-mounted. For chain mounting, consult factory. Continuous raceway and row-mounting capability.

Construction

Die and brake-formed, code gauge, pre-painted white steel. Screw-fastened end plates can be repositioned to serve as joiners for continuous row-mounting, thus forming a continuous, uninterrupted wireway. Single wireway cover on non-tandem units. Knockouts are provided for conduit attachment.

Finish

Pre-painted, high-reflectance white housing.

Electrical

Rotary lampholders ensure positive lamp retention. Sufficient knockouts are provided for connections and through wiring.

Approvals

Approved to CSA and UL standards.

Features

- Available in lengths from 6 to 96 inches
- Flip-up socket bars
- Available in T5 (pre-heat), T8 and T12 configurations

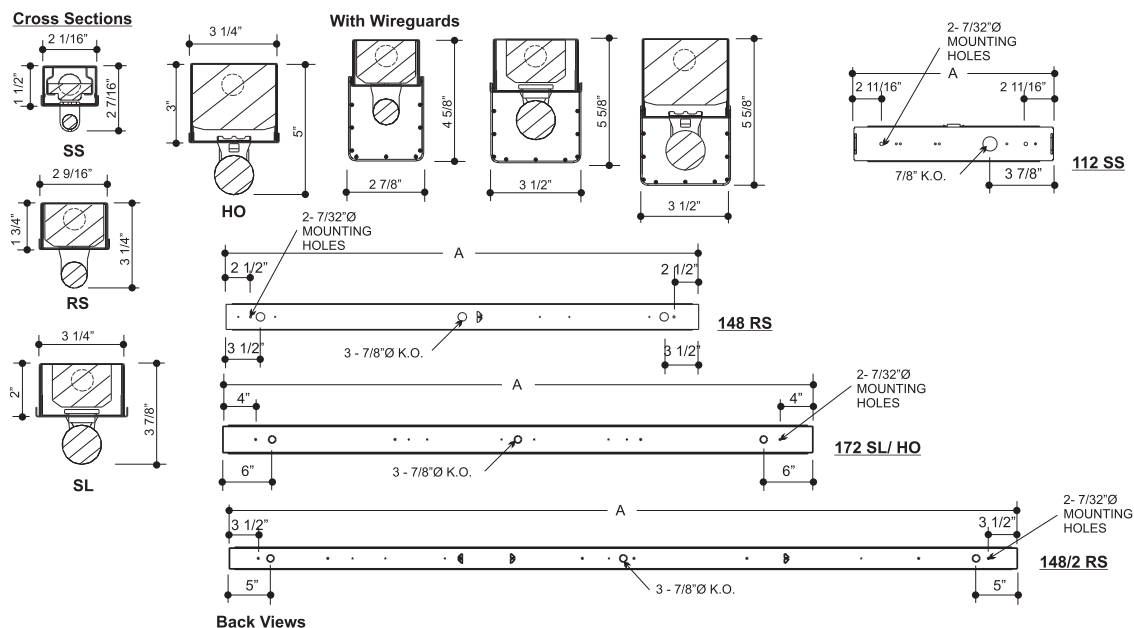
Options & Adders

- Dimmable and Emergency ballast
- Heavy-duty wireguards with powder coated white finish and comes with mounting hardware
- Light duty wireguards are available in zinc (standard) or a powder coated white finish and come with mounting hardware
- 20 gauge riveted construction
- Convenience outlet
- Pull chain, Toggle and Turn switch

Applications

- Storage Areas
- Manufacturing Areas
- Parking Garages
- Stairwells
- Utility Areas
- Valances
- Warehouse Areas

Dimensions



MODEL	LENGTH A (in.)
106	6
109	9
112	12
115	15
118	18
124	24
136	36
136/2	72
148	48
148/2	96
148/136	84
172	72
196	96

