

| |
|---------|
| Project |
| Type |
| Date |
| Cat # |

Application Features

Specification-grade, corner-mounted fluorescent luminaire. This luminaire's 90/45 degree design and its provisions for continuous row-mounting, makes it an excellent luminaire for most interior perimeter and corridor lighting applications.



Specifications

Optical System

Standard diffuser is a clear prismatic pattern #12 acrylic lens, designed for high-efficiency and low-glare illumination. Optional shielding is available, see product key for alternate configurations.

Mounting

Mounting holes are provided. Mounts over electrical junction box.

Construction

CNC brake-formed code gauge steel. Spot-welded for rigidity and clean appearance. Flattened knockouts are provided on ends for through wiring. Diffuser is held within a hinged door frame. Hinge is concealed. The optional gasketing eliminates light leaks. This luminaire is suitable for row-mounting.

Finish

White, polyester powder painted housing.

Electrical

Rotary lampholders ensure positive lamp retention. Sufficient knockouts are provided for connections and through wiring.

Approvals

Approved to CSA and UL standards.

Features

- Available with 1, 2 or 3 lamps (T5 and T8 configurations)
- Welded steel housing
- Clear prismatic acrylic diffuser

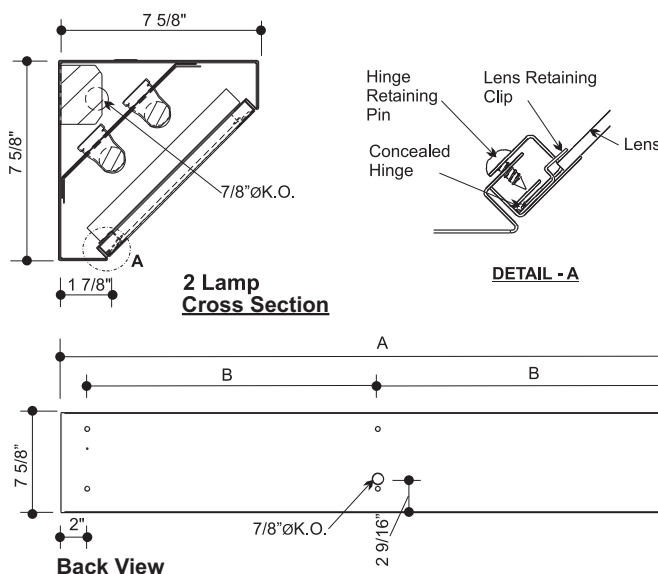
Options & Adders

- Multi-level switching
- Dimmable and Emergency ballast
- Radio interference filter (120V - 277V)
- Vandal-resistant door frame
- Acrylic lens #12 pattern
- Clear, prismatic polycarbonate lens
- Light leak gasketing
- Tamper-proof fasteners

Applications

- Chronic Care Facilities
- Corridors
- Fitting Rooms
- Hospitals
- Locker Rooms
- Nursing Homes
- Stairwells

Dimensions



| MODEL | NOMINAL LENGTH | A | B |
|-------|----------------|---------|---------|
| 124 | 24" | 24 1/4" | 10 1/8" |
| 224 | | | |
| 136 | 36" | 36 1/4" | 16 1/8" |
| 236 | | | |
| 148 | 48" | 48 1/4" | 22 1/8" |
| 248 | | | |

