

Project
Type
Date
Cat #

Application Features

Specification-grade, recessed, lay-in T-Bar luminaire with door frame. For use with indoor air handling applications where high-efficiency and ease of installation are required.



Specifications

Optical System

Standard diffuser is a clear prismatic pattern #12 acrylic lens, designed for high-efficiency and low-glare illumination. Optional shielding is available, see product key for alternate configurations. Optional reflectors are available in specular aluminum with a minimum reflectance of 95%.

Mounting

Lay-in type luminaire for exposed grid type acoustical ceiling structure. Holes provided for chain-mounting support to building structure. Integral earthquake clips.

Construction

Die-formed, code gauge steel. Die-formed steel reveal. Wiring access plate or knockouts are provided on back of housing for conduit attachment. Knockouts are provided on ends for through wiring. The heavy-gauge door frame hinges downward on either side, and is held in the closed position by two positive cam latches. Ballast cover snaps into place eliminating the need for tools when accessing the ballast.

Finish

Pre-painted, high-reflectance white housing. Powder painted black reveal.

Electrical

Rotary lampholders ensure positive lamp retention. Sufficient knockouts are provided for connections and through wiring.

Approvals

Approved to CSA and UL standards.

Features

- Air functions - choice of static, air supply
- Available with 1, 2, 3, 4 or 6 lamps (T5, T8 and PLL/Biax configurations)
- Access plate for quick wiring
- Available in 1 x 4, 2 x 2 and 2 x 4 configurations
- Integral earthquake clips
- Positive locking, cam action latches - matching finish

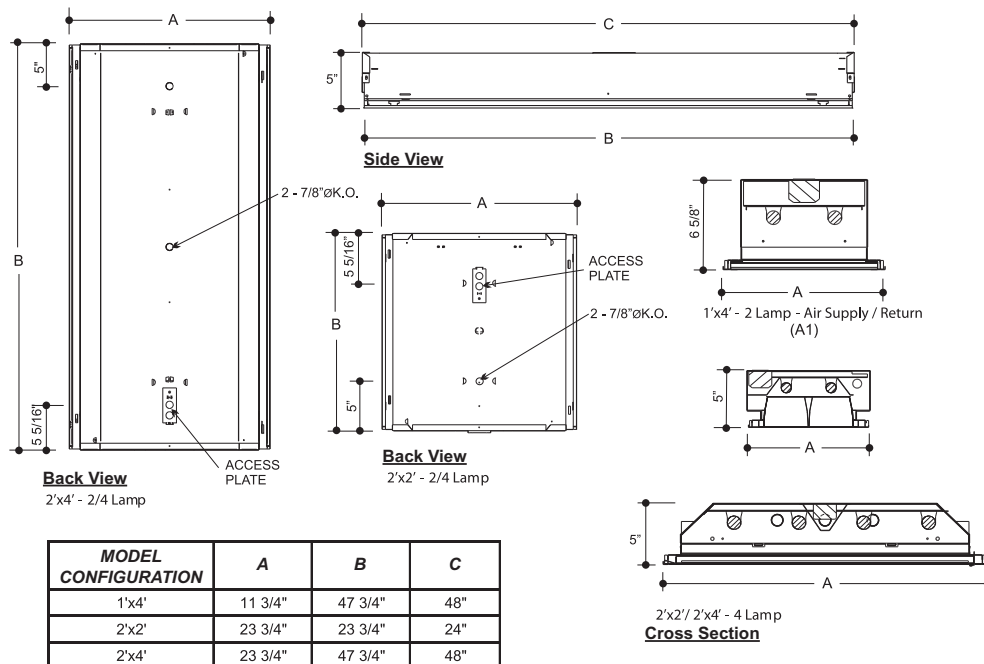
Options & Adders

- Multi-level switching
- Dimmable and Emergency ballast
- Radio interference filter (120V - 277V)
- White reveal
- 20 gauge riveted construction
- Flexible metal whip - 6 foot x 3/18 gauge conductors
- Metric configurations (consult factory)

Applications

- Institutional Lighting
- Office Areas

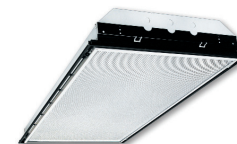
Dimensions



Project
Type
Date
Cat #

AHTB Air Handling T-Bar

Specification-Grade Recessed Air Handling T-Bar Luminaire



Photometrics

Ordering

AHTB			-				-		Options
Size (Width x Length)	No. of Lamps	Lamp Watts See Table below	Lamp Type	Voltage	Ballast Type	Air Handling Options <i>(Static is standard)</i> <input type="checkbox"/> A1 Air Supply/Return Slots Ballast Options <i>(See Option Code Section For More Information)</i> <input type="checkbox"/> B02 Dimming Addressable Digital (dali) <input type="checkbox"/> B03 Dimming Low Voltage (0-10v) <input type="checkbox"/> B04 Dimming Line Voltage <input type="checkbox"/> B08 Ballast - High Ballast Factor <input type="checkbox"/> B09 Ballast - Low Ballast Factor <input type="checkbox"/> B30 Emergency Lighting Battery Pack Specification Grade <input type="checkbox"/> B33 Emergency Lighting Battery Pack 1-lamp <input type="checkbox"/> B34 Emergency Lighting Battery Pack 2-lamp			
	1L 2L 3L 4L 6L* * 2x4 size PLL lamps only								

Housing Construction Options

- ☐ C06 Housing 20 Gauge Riveted
- ☐ C15 Latches Spring Loaded Cam
- ☐ C23 White Reveal (Black is standard)

Door Frame Options

- ☐ D2 Door Frame Regressed Aluminum

Finish Options

- ☐ F02 Post Powder Painted (White)

Packaging Options

- ☐ K0 Pack Bulk/ Pallet Packed and/or Wrapped

Louver Options (in place of lens, select one only)

- ☐ L11 Louver 1/2 X 1/2 X 3/8 White Eggcrate Acrylic

Lens and Shielding Options (select one only)

(Pattern 12 Prismatic Acrylic is standard)

- ☐ P01 Drop Dish Acrylic Shaped Vacuum Formed Opal
- ☐ P05 Clear Acrylic Lens
- ☐ P07 Clear Polycarbonate Lens
- ☐ P13 Prismatic Acrylic Lens - P12 Nominal .125" Thick
- ☐ P16 Prismatic Polycarbonate Lens - P12
- ☐ P45 Clear Polycarbonate Lens - .125" Thick

Fusing and Breaker Options (select one only)

- ☐ T5 Fuseholder, In-line Double Pole
- ☐ Fuseholder, In-line Single Pole

Wiring Options

- ☐ V08 Flexible Feed Cord (single circuit only)
- ☐ V09 Flexible Whip (standard 6' X 3-18 Ga.)
- ☐ V17 Master / Slave Wiring Master Unit (contains Ballasts)
- ☐ V18 Master / Slave Wiring Slave Unit (contains No Ballast)
- ☐ V19 Modular Wiring System. (consult factory)
- ☐ V25 Radio Frequency Filter

Reflector Options

- ☐ VF1 Reflector VF1 Specular (95% Reflectance) Aluminum

Approval and Rating Options

- ☐ X7 Dual CSA and USA Markets

Lamp Options

- ☐ Z1 Lamps installed (specify type)

Example:

AHTB2x44L-T832PUNV-A1B01C06L11

Size	Nom. Lamp Watts					
	T5	T5HO	T8	T8U2	T8U6	PLL/ Biax
1x4	28 (1 or 2 lamps)	54 (2, or 4 lamps)	32 (1 or 2 lamps)			
2x2	14 (2, 3 or 4 lamps)	24 (2, or 4 lamps)	17 (2, 3 or 4 lamps)	31 (2, or 4 lamps)	32 (1 or 2 lamps)	40, 50, 55 (2, 3 or 4 lamps)
2x4	28 (2,3,4 lamps)	54 (4,6,or 8 lamps)	32 (2,3,4 lamps)			

Other options may be available consult factory.
Specifications and data subject to change without notice.