

Project:	Catalogue #:	Type:
Notes:		

### Product Description

The VRS series by Certolux is a specification-grade, surface mount, overlapping door, drop lens luminaire, for Vandal Resistant applications such as parking garages or stairways. Available in 24" or 48" configurations.

### Feature Options

- Mounting options available

### Housing

Precision formed, TIG welded, one piece 20 gauge cold rolled steel housing. Welded and PEM studs are used in order to mount components.

### Mounting

The housing is provided with mounting holes.

### Reflector

Painted white reflector is standard, optional VF1 reflectors are available which are made of specular anodized aluminum with a minimum reflectivity of 95% (see product ordering guide).

### Door Frame

One piece door frame, fabricated from 18 gauge, cold rolled steel with TIG welded corners. It is retained by a full length piano style hinge. The door is retained by stainless steel, captive fasteners with integral silicone o-rings easily secure door frame to housing through use of floating cage nuts. Optional Tamperproof fasteners available (see ordering key).

### Lens & Lens Retention

The lamp compartment is protected by a prismatic drop dish polycarbonate lens. The lens is secured with adjustable Z style brackets with weld studs on housing faceplate. Lens is sealed to the door frame with neoprene gaskets.

### Door Frame Gasket

The lens door frame is sealed to the housing with neoprene gasketing.

### Finish

White, polyester powder painted housing.

### Electrical

Long life LED's coupled with high efficiency drivers provide quality illumination. Rated to deliver an L80 performance >50,000 hours. The standard driver has a THD of <20%. Standard low voltage dimming (0-10v, 1%). All electrical components are CSA or UL approved. Sufficient knockouts are provided for connections and through wiring.

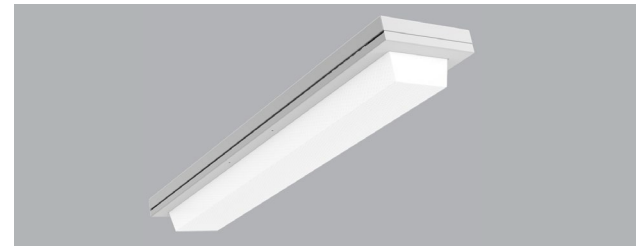
### Warranty

5 year limited warranty. For complete warranty, click here:

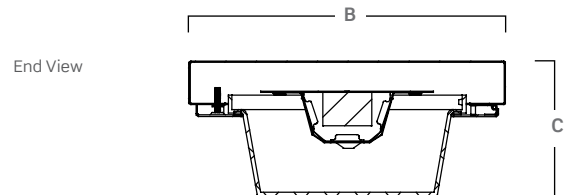
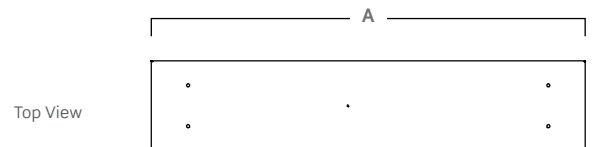


### Approvals

- CSA and UL listed.



### Dimensions



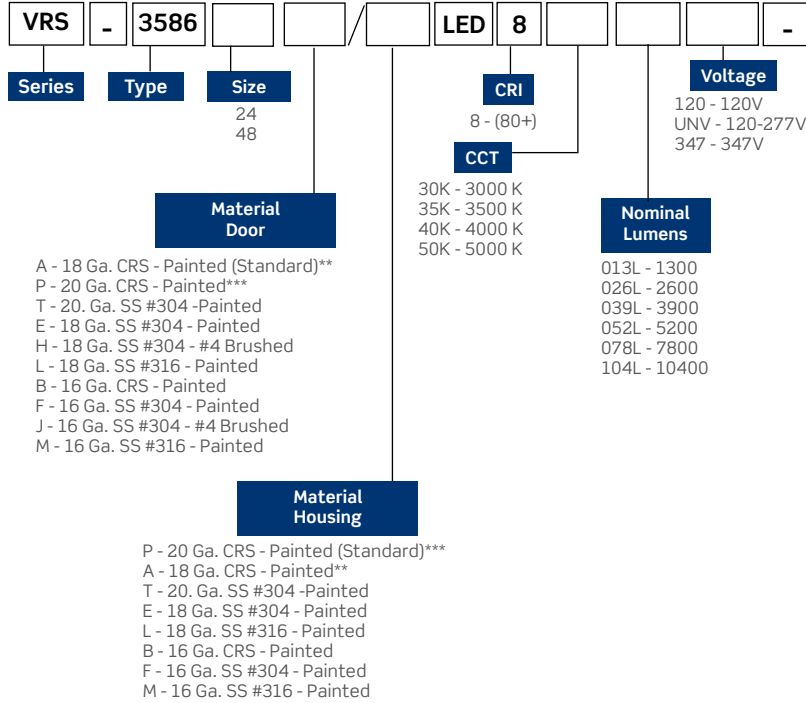
	Dimensions (inch) & Weights		
	A	B	C
24	29"	11"	4.67"
48	53"	11"	4.67"

Consult installation guide for exact dimensions.

Project:	Catalogue #:	Type:
Notes:		

Order Key

EXAMPLE: VRS-3586-24A/P-LED840K052LUNV



Options

**Housing Construction Options**  
C03 Fasteners Tamperproof

**Door Frame Options**  
D14 Door Frame Full Length Hinge

**Paint Options**  
F32 White Semi Gloss Series 38 Super Durable

**Mounting Options**  
M40 Mounting Safety Lens Tether Stainless Steel

**Packaging Options**  
K0 Bulk Pack/Pallet Packed and/or Wrapped  
K1 Pack Single

**Approvals Options**  
X7 Dual CSA/USA

\*\*Standard door frame material.

\*\*\*Standard housing material.

Other options may be available, consult factory.  
Specifications and data subject to change without notice.

Performance Data		
Size	Nominal Lumens	Watts
24	1300	15
	2600	30
	3900	45
	5200	60
48	2600	30
	5200	60
	7800	90
	10400	120

\* Lumen values are based on 4000K, 80 CRI performance.  
See Lumen Multipliers below for other CCT or CRI performance data.