

Project:	Catalogue:	Type:
Notes:		

Product Description

The MRI North™ 3D luminaire is a design forward solution for MRI and imaging spaces, integrating high resolution, multilayered imagery with a fully illuminated aperture to create a soft, cohesive ceiling aesthetic. Constructed from non magnetic materials and powered by a low voltage, remotely mounted, EMI filtered Class 2 DC power system, the luminaire ensures safe, reliable performance without impacting imaging functionality or architectural intent.

Applications

MRI Suites and Hybrid OR (Operating Rooms)

Features

- Multilayer lensing for superior image depth
- Uniformly illuminated aperture with bezels fully concealed
- Non-magnetic construction
- Shallow profile for obstructed plenum applications
- Antimicrobial finishes
- Low-voltage, remote mounted and EMI filtered DC system

Featured Options

- Multiple image options
- 2x2, and 2x4 panels
- Arrays up to 12ft x 12ft
- Low voltage dimming 0-10V 1%, 0.1% or DALI*

The North Series

For our North series of products [click here](#).

Housing

Die-formed aluminum housing.

Lens

High-resolution digital printed acrylic lens provide soft, low glare illumination, while maintaining high-efficiency uniform light distribution.

LED

LED light engine is field replaceable and serviceable from plenum. LEDs are high efficiency and closely regulated to maintain CRI, color consistency, lumen performance, and efficacy. Lifetime L70 performance for over 60,000 hours.

Electrical

Low voltage (Class 2) DC with constant current reduction dimming provided by a series of scalable, EMI filtered, remote mounted power enclosures.

Finish

5-stage pretreatment and antimicrobial matte white polyester powder coated.

Mounting / Installation

This luminaire has been specifically designed for T-Bar applications. Holes provided for chain mounting support to building structure with integral earthquake clips.

Listings, Certifications and Ratings

Approved to CSA/UL standards. ETL listed for insulated ceilings. Tested in accordance to IESNA LM-79. Suitable for dry and damp locations.



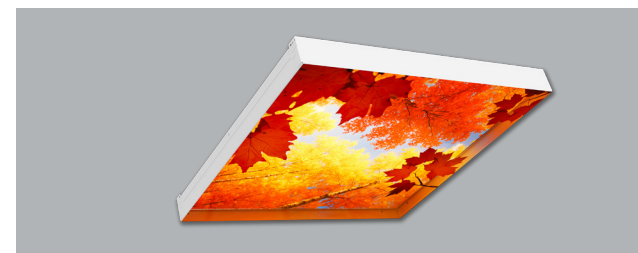
Warranty

5-year limited warranty. For complete warranty, click here:



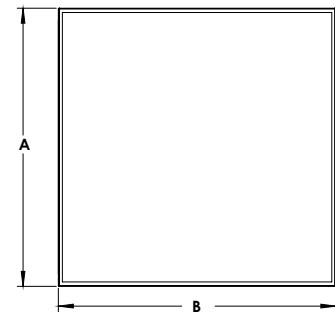
Approvals

- ETL Certified to UL1598 and CSA22.2 no 250.0
- Suitable for dry and damp locations
- RoHS Compliant

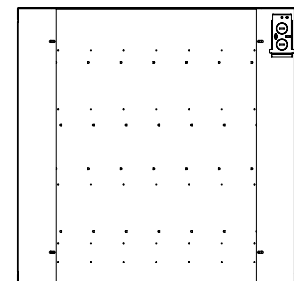


Dimensions

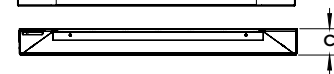
Top View



Back View



End View



Dimensions (Inch)			
Size	A	B	C
2x2	23.75	23.75	3.50
2x4	23.75	47.75	3.50

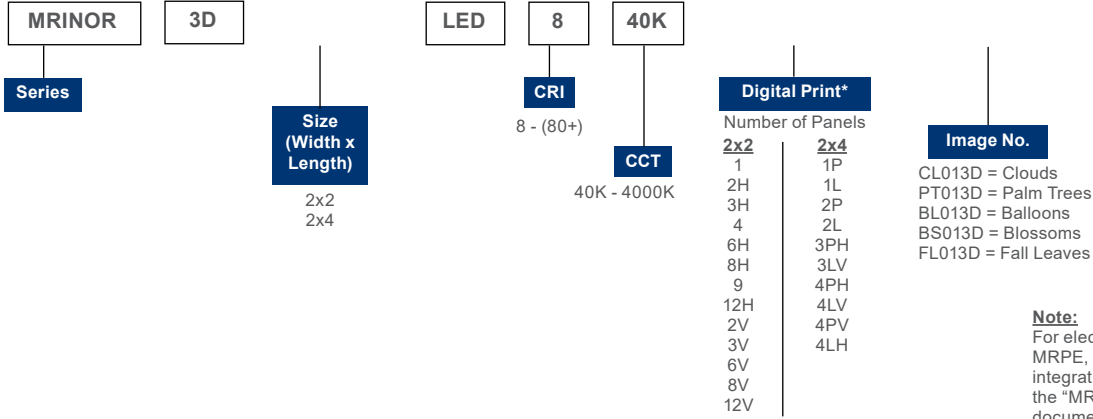
*For electrical specifications, refer to "MRPFE, MRPE, and MRFE" spec sheets. For full system integration and installation guidance, consult the "MRI System Overview and Installation" document.

Consult the installation guide for exact dimensions.

Project:	Catalogue:	Type:
Notes:		

Order Key

EXAMPLE: MRINOR 2X2-LED840KUNV4CL01



Note:
 For electrical specifications, refer to "MRPFE, MRPE, and MRFE" spec sheets. For full system integration and installation guidance, consult the "MRI System Overview and Installation" document.

* See layout options below. Consult factory for additional configurations.

Size	Power Consumption (W)
2x2	20
2x4	40

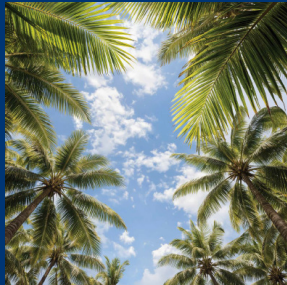
Lifetime Expectancy

	Calculated Hours	Reported Hours
L70	≥ 238,000	> 60,000
L80	≥ 149,000	> 60,000
L90	≥ 71,000	> 60,000

The North™ 3D Image Inspiration - Consult Factory for Additional Concepts



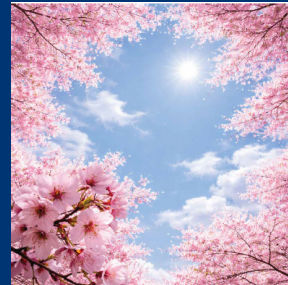
CL013D = Clouds



PT013D = Palm Trees



BL013D = Balloons



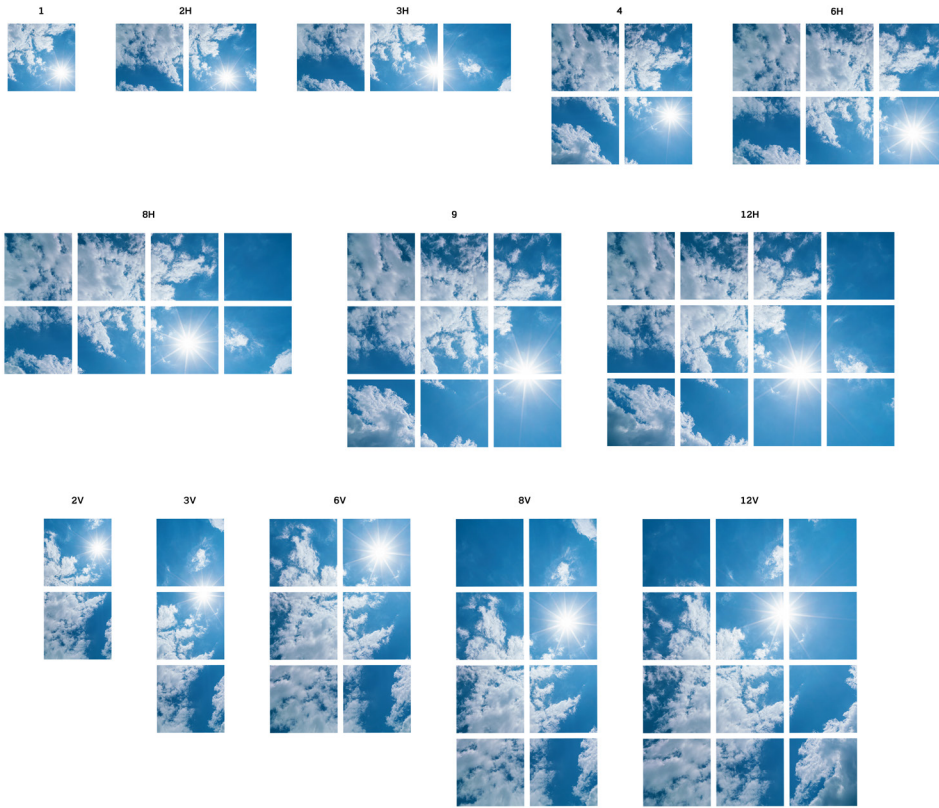
BS013D = Blossoms



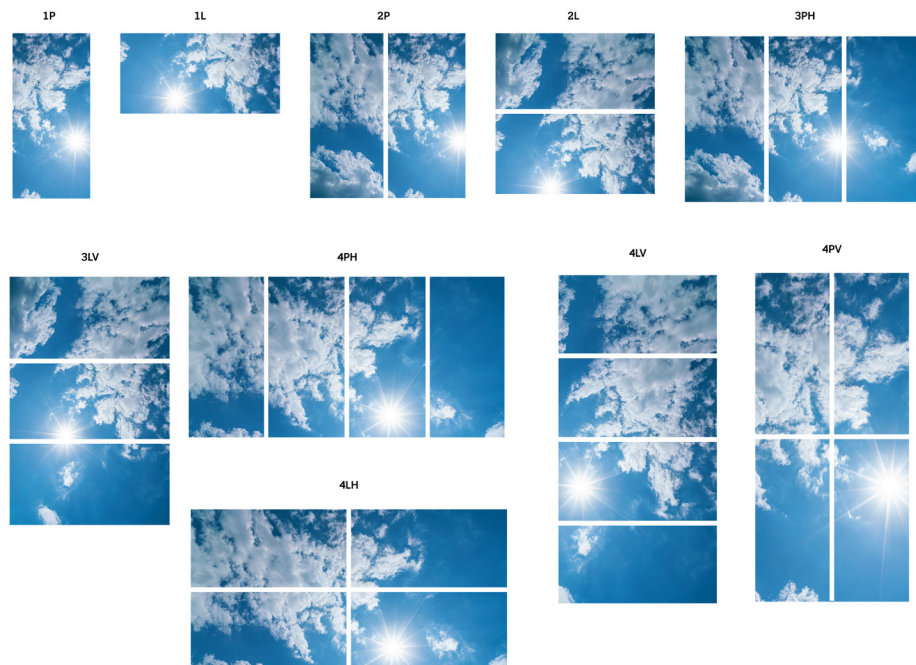
FL013D = Fall Leaves

Project:	Catalogue:	Type:
Notes:		

Digital Print - Layout Options for 2x2



Digital Print - Layout Options for 2x4



Consult factory for other images and options.