

Project:	Catalogue #:	Type:
Notes:		

Product Description

The LTDCR-LRC by Certolux is a vandal-resistant specification grade recessed luminaire is flanged for hard ceilings. Not for use with grid ceilings. Anti-Ligature is a standard feature of this series. This luminaire also features tamper-resistant fasteners to protect from unauthorized fixture penetration and security lenses to maximize impact resistance. Government accepted for use in areas of high risk.

Features

- Internal Opal acrylic diffuser
- Heavy-duty construction
- Standard low voltage dimming (0-10v)
- Access plate for quick wiring
- Available in 2x2 configuration
- For use in insulated ceilings

Featured Options

- Emergency battery pack
- Optional lenses, see product selection
- Convex Lenses

Applications

- Behavioral Health
- Day Rooms
- Patient Rooms



Housing

Die-formed, 22 gauge post-painted steel. Access plate for quick wiring. Knockouts are provided on ends for through wiring.

Security Doorframe

One-piece die-formed 16 gauge steel doorframe secures diffuser with continuous brackets and thru-studs. Secured to housing with (8) TorxTM tamper resistant countersunk screws.

Optical System

Standard diffuser is a two piece system consisting of an internal .040" thick flat opal polycarbonate that hides LEDs giving a smooth appearance. The outer surface is .25" thick clear polycarbonate to resist breakage or displacement.

Electrical

LED board modules are high efficiency and closely regulated to maintain CRI, color consistency, lumen performance, and efficacy. Select from 3500K or 4000K color temperatures with a color consistency of 3 SDCM, standard 80 CRI, optional 90 CRI. Tunable White CCT range is 2700-6500K. Lifetime L80 is greater than 50,000 hrs. Modules are field replaceable and commercially available. The standard electronic driver is constant current, programmable and dimmable to 1% using a 0-10V protocol. High efficiency (>85%) and low THD (<10%). Certified to FCC Part 15, Class A. 120-277Vac or 347Vac, 50/60hz. Internal Emergency Drivers are serviceable from the room side unless otherwise noted. See Options for 20 watt RGB color tuning circuit controlled by DMX (Controls by others).

Mounting

This fixture is specifically designed for hard ceilings, such as cement board or drywall. It may be used in metal security ceilings designed for behavioral health applications. Regardless of the ceiling material, this fixture is to be selected and installed by someone familiar with the risks of the area involved. The anti-ligature performance of the assembly of the ceiling and fixture must be evaluated and approved by an authority familiar with these risks and constructions.

Finish

White, Architectural matte white polyester powder painted finish on doorframe. Gloss white finished internal reflectors.

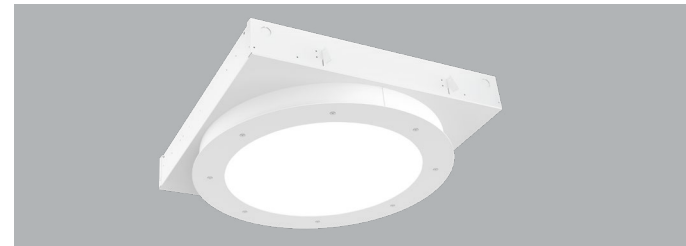
Warranty

5 year limited warranty. For complete warranty, click here:

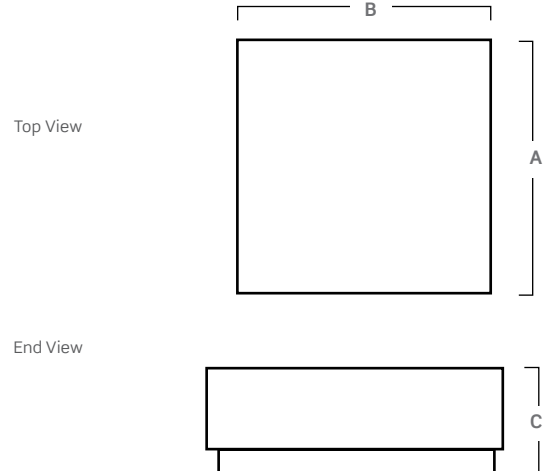


Approvals

- Approved to CSA/UL standards.
- UL listed for insulated ceilings.



Dimensions



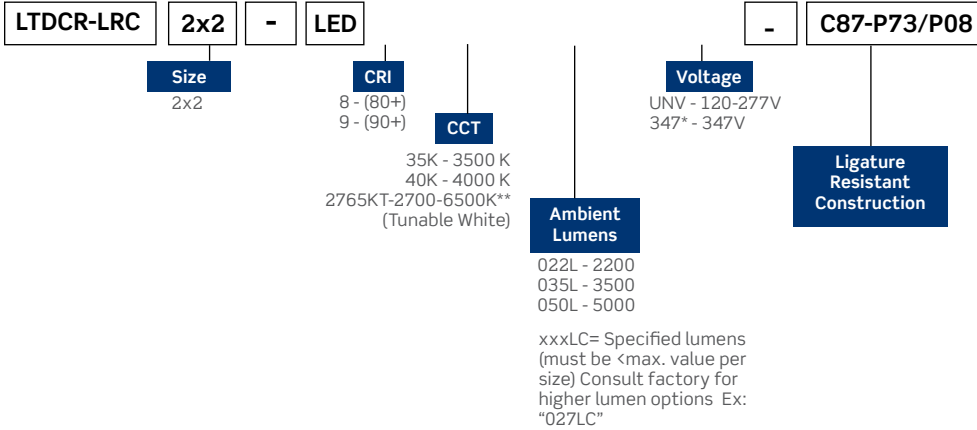
	Dimensions (inch) & Weights		
	A	B	C
2x2	22 3/4"	22 3/4"	5"

Consult installation guide for exact dimensions.

Project:	Catalogue #:	Type:
Notes:		

Order Key

EXAMPLE: LTDCR-LRC2X2-LED8-80+UNV-C87-P73/P08



- Options**
- Driver Options**
 B02 DALI Dimming Driver
 B39 Emergency Lighting Battery Pack - LED
- Finish Options (Gloss White Std)**
 F09 Matte White
 F37 Matte White, Antimicrobial*
 F47 Gloss White, Antimicrobial*
- Packaging Options**
 K0 Bulk Pack/Pallet Packed and/or Wrapped
- Wiring Options**
 V39 Night Light - White LED
 V40 Low Voltage Controller (No Dimming)
 V40(D) Low Voltage Controller (Dimmable)
 V132 RGB Color Tuning, 20 watts (DMX)
- Lens Options**
 P73/P08 1/4" Flat Clear Polycarbonate with Frosted polycarbonate overlay (standard lens) Other thicker lens options are available

xxxLC= Specified lumens (must be <max. value per size) Consult factory for higher lumen options. Ex: "027LC"

Performance Data		
Size	Ambient Lumens	Watts
2x2	2200	33
	3500	52
	5000	75

* Consult factory for availability.

Other options may be available, consult factory. Specifications and data subject to change without notice.