

Installation Instruction Guide Visioneering LRK-HBV (LED Retrofit Kit High Bay Vapor Tight) ERP# IIS00233

(Designed to retrofit Fluorescent Vapor Tight High Bay luminaires Compatible with Visioneering FHBV series, Lithonia FHE series, Cooper VT4 series, Columbia XEW4 Series, Philips DayBrite CFI series, SLP Lighting CIT4/4i Series, and ILP Blizzard Series)

READ AND FOLLOW ALL SAFETY INSTRUCTIONS

IMPORTANT SAFETY INSTRUCTIONS

WARNING

FAILURE TO FOLLOW THESE INSTRUCTIONS AND WARNINGS MAY RESULT IN SERIOUS INJURY OR SIGNIFICANT PROPERTY DAMAGE

For your protection, carefully read all of these warnings and instructions completely before installing or maintaining this equipment. These instructions do not attempt to cover all installation and maintenance situations. If you do not understand these instructions or if additional information is required, contact Viscor Inc or your local Viscor representative/distributor.

WARNING

RISK OF FIRE OR ELECTRIC SHOCK.

LED Retrofit Kit installation requires knowledge of luminaires electrical systems. If not qualified, do not attempt installation. Contact a qualified electrician.

WARNING

RISK OF FIRE OR ELECTRIC SHOCK.

Luminaire wiring and electrical parts may be damaged when drilling for installation of LED retrofit kit. Check for enclosed wiring and components.

WARNING

RISK OF FIRE OR ELECTRIC SHOCK.

Install this kit only in luminaires that have the construction features and dimensions shown in the photographs and/or drawings and where the input rating of the retrofit kit does not exceed the input rating of the luminaire.

Do not make or alter any open holes in an enclosure of wiring or electrical components during kit installation.

Based on maximum voltage restrictions for Class 2 circuits in the Canadian Electrical Code, the output cannot be accessible. This product complies with this requirement since the installation instructions require installation in restricted access area.

WARNING

RISK OF FIRE, ELECTRIC SHOCK, OR PERSONAL INJURY


Do not install in a damaged fixture.
Before Installation, turn power off.

WARNING

RISK OF FIRE OR ELECTRIC SHOCK

To prevent wiring damage or abrasion, do not expose wiring to edges of sheet metal or other sharp objects.

Kit Contains

Quantity	Name	Image
1	Fixture Label	Not shown
1	Retrofit Tray	

Tools Required



 WARNING

RISK OF FIRE, ELECTRIC SHOCK, OR PERSONAL INJURY

Do not install in a damaged fixture.

Before Installation, turn power off.

Verify Voltage of the Retrofit kit matches existing Voltage – If there is a mismatch DO NOT proceed!

Step One:

Open existing lens, remove, and set aside for later re-installation by releasing latches on fixture housing

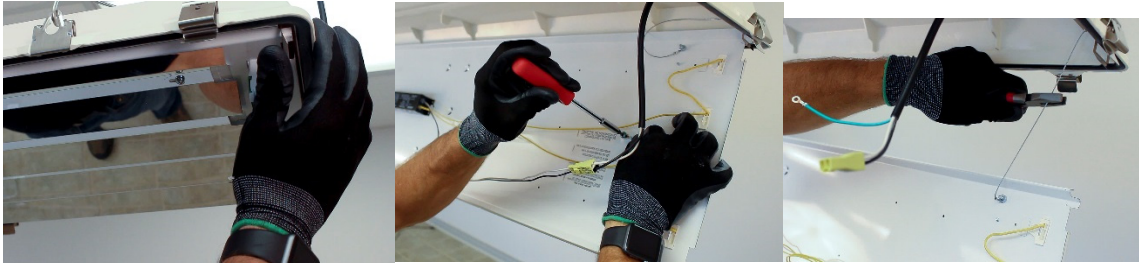


Step Two:

Remove lamps and set aside for proper Recycling

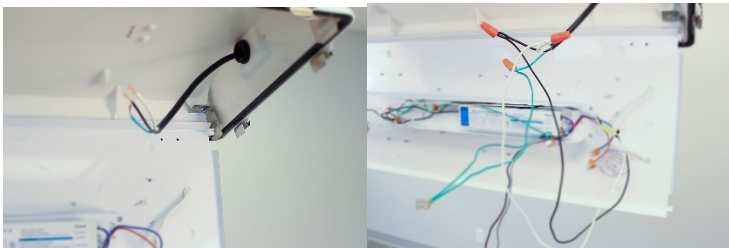
Step Three:

Release reflector/ballast tray. Disconnect ground, cut or remove tray tethers and ballast leads., Remove reflector/ballast tray and Recycle/Discard



Step Four:

Insert retrofit tray into existing two of the existing hanging clips. Connect the retrofit kit to AC power and ground.



Step Five:

Rotate tray into position and clip into place with remaining two clips. Reattach lens to fixture.

