

# VWP SERIES VANDAL WALL PLATE

## Installation Instruction

ERP: IIS00397  
04/26/2024 Rev 1.0

### NOTICE:

- For installation by a qualified electrician in accordance with national and local electrical codes and the following instructions. Equipment should be mounted in locations and at heights where it will not readily be subjected to tampering by unauthorized personnel.

### CAUTION

#### Risk of Electric Shock:

- Disconnect or turn off power before installing and test that power is off.

#### Personal Injury:

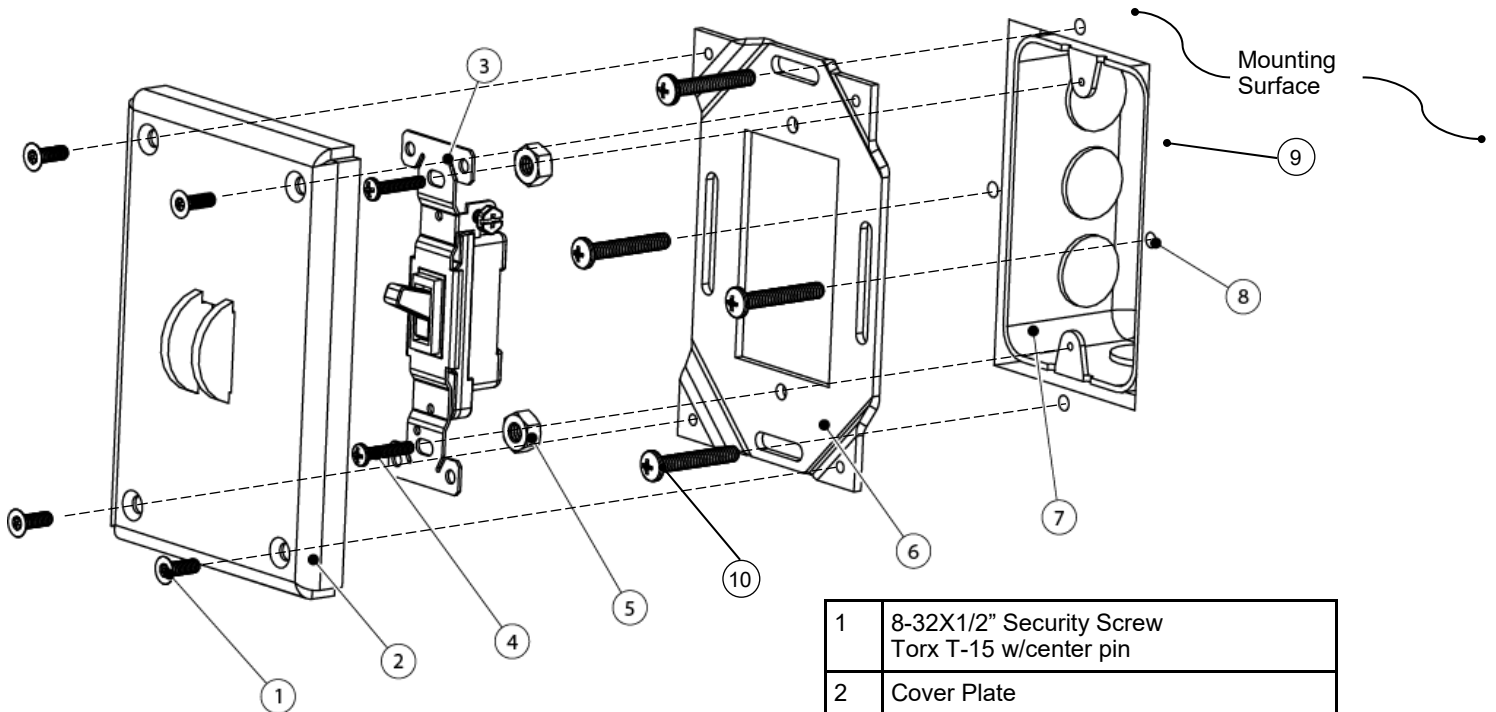
- Wear safety glasses and gloves when handling the luminaire to avoid physical injury.

Manufacturer is not responsible for any injuries due to the improper installation or handling of its products.

### INSTRUCTIONS

1. Disconnect or turn off power before installing.
2. Remove insulating washer from mounting screws of device
3. For steel wall, concrete block\* or poured wall construction, align BACKPLATE over JUNCTION BOX.
4. Drill holes in mounting surface to accommodate fasteners (by others). Avoid conduit feed( s)
5. Mount BACKPLATE to wall with fasteners through slots in BACKPLATE (fasteners supplied by installer not shown)
6. Wire and install RECEPTACLE and/or SWITCH using two #6-32 mounting screws and spacers
7. Install COVER PLATE with 8-32 security screws.

\* For concrete block or poured wall construction, use lead anchors and lag bolts ( supplied by installer. For steel wall installation, use self-tapping screws.



SWITCH INSTALLATION SHOWN

|    |  |
|----|--|
| 1  | 8-32X1/2" Security Screw<br>Torx T-15 w/center pin   |
| 2  | Cover Plate  |
| 3  | Switch or Receptacle (by others)                     |
| 4  | #6-32 Mounting Screws<br>(with Switch or Receptacle) |
| 5  | Spacer   |
| 6  | Back Plate   |
| 7  | Junction Box (by others)                             |
| 8  | Mounting Hardware Supplied by Others                 |
| 9  | Mounting Surface                                     |
| 10 | Backplate Fasteners (by others)                      |