

BDL - 4" & 6" Behavioral Health Downlights

People-First design Prioritizes Patient Safety.

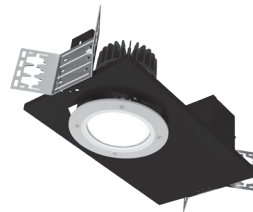
Certolux BDL downlights are your newest option for patient-safe lighting in behavioral health facilities: our people-first design combines refined residential aesthetics with the durability and rigid construction of institutional fixtures, providing hospitals and clinics with luminaires that balance both comfort and safety.

Unlike cheaply-made commodity lights, these highly efficacious downlights complement the Certolux behavioral health troffers featured in the New York Office of Mental Health (NYOMH) Safety Guide. They are designed to protect both patients and staff, thanks, in part, to an IP65 rating, IK10 rating and NSF2 certification, as well as tamper-resistance.

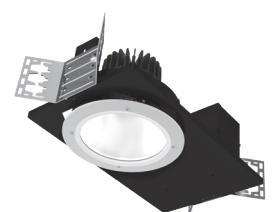
Discover Certolux's new BHD downlight series – designed with care to put people, and their safety, first.

Features:

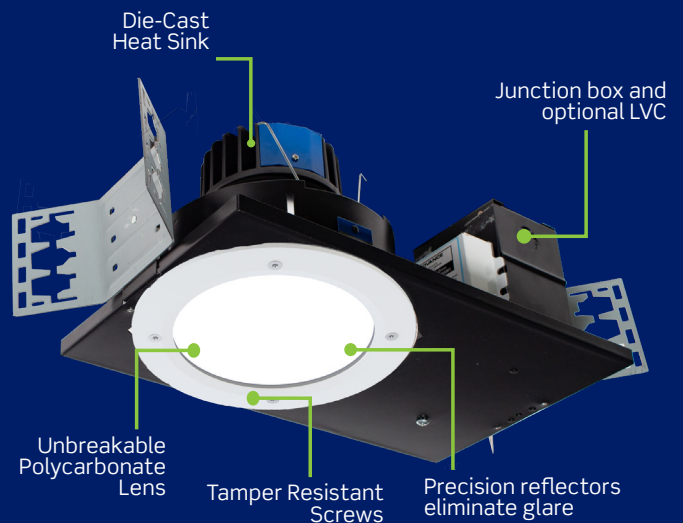
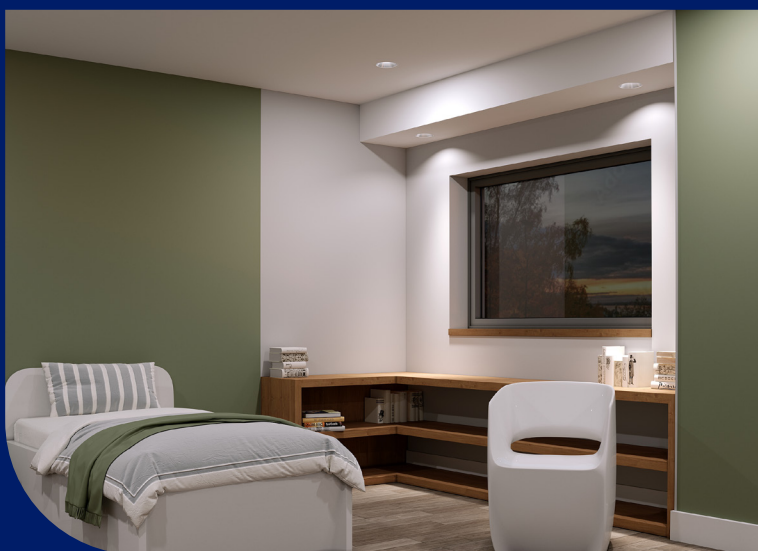
- Rigid die cast trim
- Durable polycarbonate lens
- Tamper resistant Torx™ screws
- IP65 rated sealed optical chamber
- Designed for hard ceilings & security ceilings
- Optional 97 CRI+, R9>97 light engine
- Antimicrobial finished trims
- Optional low voltage controller



4-inch



6-inch



Shown here is a 6" downlight