

# MSU Recessed Surgical Luminaire

**Versatile recessed surgical suite luminaire with Overlapping door and Inset door frames with white and green LEDs.**

Certolux's new MSU series of recessed surgical suite luminaires offer multiple lumen package options, versatile housing and door construction with configurable lens combinations. The standard antimicrobial one piece housing construction and triple gasketing provide a perfect solution for stringent operating theaters.

The MSU series consist of 2 designs with white and green LEDs. The MSUi and MSUi-Green LED Recessed Surgical Luminaire comes with a Inset Door Frame. The MSUo and MSUo-Green LED Recessed Surgical Luminaire comes with an Overlapping Door Frame.

The MSU series is Mil-Std-461G certified and designed for recessed mounting in surgical ceiling systems as well as grid and flanged installations.

**Features:**

- Green & White LED Arrays
- Shallow Design, 4" Deep with Emergency
- Dimming to 1% (0-10v)
- Triple gasketed cleanroom construction
- Mil-Std-461G certified
- Smooth lens for easy cleaning
- Room side access to all electrical components

**Featured Options:**

- Available sizes: 1x4 | 2x2 | 2x4
- Fully luminous lens aperture option
- Up to 24,000 lumens
- Symmetric & Asymmetric options
- Optional 90CRI



**MSUi (2x2)**

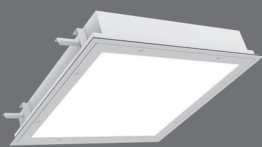


**MSUo-Green (2x2)**

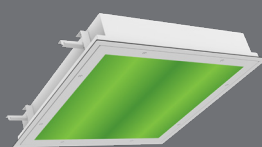


MSUi - Inset Door

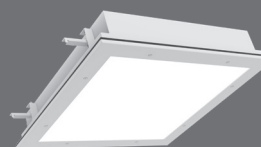
MSUo - Overlapping door



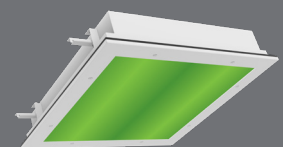
MSUi



MSUi-Green



MSUo



MSUo-Green