

Project	
Type	
Date	
Product Code	
Approved by	

SAFG 1X4 - Superseal Alpha Flanged - Cleanroom

Premium Recessed Grid Overlapping Door
Cleanroom Luminaire
Suitable for ISO Class 4 - 8 Cleanrooms
LED

Cleanroom

Product Specifications - Application

The SAFG series by Certolux is a specification-grade, **LED** recessed grid IP65, IP66 IC-rated luminaire, for ISO Class 4 Cleanrooms. Available in 1x4 configurations. Ideal for Pharmaceutical manufacturing, Food Processing, Life Sciences and laboratories. NSF/ANSI 2 Food Zone Non-contact and Splash Zone Applications. For use in Wet Locations, Insulated Ceilings. For use in Hazardous Locations, consult ordering key.



3755

Product Specifications

Housing

Precision formed, TIG welded, one piece 18 gauge cold rolled steel housing.

Mounting

Earthquake clips provided.

Lens and Lens Retention

The standard lens assembly is made with a tempered safety glass sealed to the lens frame with a non-silicone sealant together with an overlay of a pattern #12 acrylic lens, mechanically secured.

Door Frame

One piece 60° beveled perimeter door frame, fabricated from 18 gauge, cold rolled steel with TIG welded corners. The door assembly is self centering by means of locating studs. It is retained by stainless steel aircraft cable when opened. Specialized, military grade, flat head, stainless steel, captive fasteners with integral silicone o-rings easily secure door frame to housing through use of floating cage nuts. Silicone o-rings offer superior performance and longer life over comparable teflon bushings. Protective stops prevent the fasteners from being over-tightened and bending the lens door frame. Custom shaped, extruded closed cell silicone gasketing is used throughout to ensure precise, redundant seals between door assembly, housing and plenum. Vulcanized corners ensure continuity of the seal on the frame gasket. Continuous retention-mounts mechanically secure and evenly distribute force against both gasketing and diffuser.

Finish

The luminaire is in a polyester powder painted white finish.

Approvals

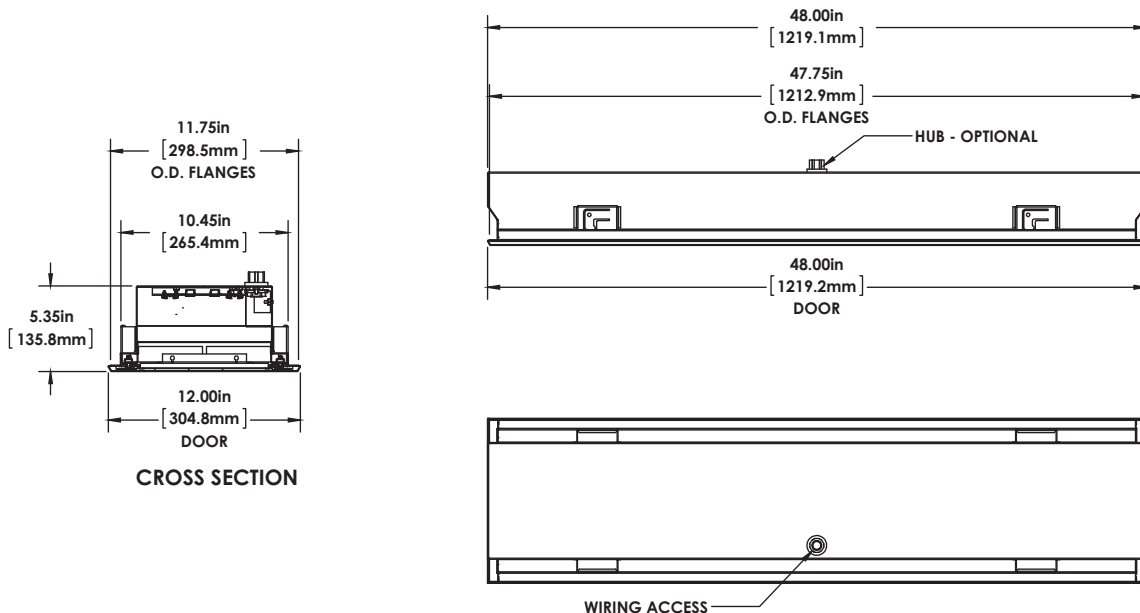
Approved to CSA and UL standards. UL Listed for wet locations, insulated ceilings. For use in Hazardous Locations Class I Zone 2, Zone 22. Consult ordering key for HazLoc options and Temperature Codes.



Electrical

Long life LED's coupled with high efficiency drivers provide quality illumination. Rated to deliver an L80 performance >50,000 hours. The standard driver has a THD of <20%. Standard low-voltage dimming (0-10v, 1%). All electrical components are CSA or UL approved.

Dimensions



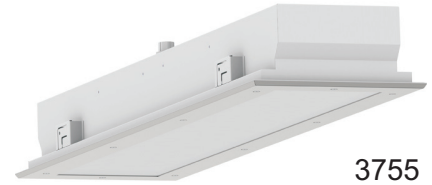
Dimension Note:

Exterior fixture dimensions displayed. Please see installation guide for exact ceiling cut-out and mounting details or consult factory.

Project	
Type	
Date	
Product Code	
Approved by	

SAFG 1X4 - Superseal Alpha Flanged - Cleanroom

Premium Recessed Grid Overlapping Door
Cleanroom Luminaire
Suitable for ISO Class 4 - 8 Cleanrooms
LED



3755

Product Specifications - Application

The SAFG series by Certolux is a specification-grade, **LED** recessed grid IP65, IP66 IC-rated luminaire, for ISO Class 4 Cleanrooms. Available in 1x4 configurations. Ideal for Pharmaceutical manufacturing, Food Processing, Life Sciences and laboratories. NSF/ANSI 2 Food Zone Non-contact and Splash Zone Applications. For use in Wet Locations, Insulated Ceilings. For use in Hazardous Locations, consult ordering key.

Ordering

SAFG-3755	1X4	-	LED	8						
Series	Model		Light Source	CRI			Voltage	Options		
				8 - (80-89)			UNV - 120-277V 347 - 347V	<u>Driver/Controller Options</u> <input type="checkbox"/> B02 Dimming Addressable Digital (DALI) <input type="checkbox"/> B39 Emergency LED Battery Pack <u>Housing Construction Options</u> <input type="checkbox"/> C38 Housing Aluminum .050 Painted <input type="checkbox"/> C44 Housing SS #304 Painted <input type="checkbox"/> C57 Housing for 2" T-Bar <u>Door Frame Options (painted CRS is standard)</u> <input type="checkbox"/> D3 Door Frame Stainless Steel (#304) <input type="checkbox"/> D9 Door Frame Stainless Steel (#316) <input type="checkbox"/> D10 Door Frame Aluminum .063 Painted <input type="checkbox"/> D17 Door Frame SS (#304) Painted <input type="checkbox"/> D18 Door Frame SS (#316) Painted <u>Packaging Options</u> <input type="checkbox"/> K0 Pack Bulk <u>Lens and Shielding Options</u> (Clear Tempered Glass w/Pattern 12 Prismatic Acrylic overlay is standard) <input type="checkbox"/> P56 Lens Clear Acrylic <input type="checkbox"/> P06 Lens Clear Glass Tempered <input type="checkbox"/> P11 Lens .156 Acrylic - P19 <input type="checkbox"/> P13 Lens Prismatic Acrylic - P12 .125" Thick <input type="checkbox"/> P14 Lens Clear Glass Tempered with Prismatic Acrylic Overlay <input type="checkbox"/> P16 Lens Prismatic Polycarbonate - P12 <input type="checkbox"/> P73 White Translucent Polycarbonate <input type="checkbox"/> P82 White Translucent Acrylic .080 <input type="checkbox"/> P73 Lens White Translucent Polycarbonate <u>Wiring Options</u> <input type="checkbox"/> V57 Sealed Wireway 90 degree connector w/10ft Liquid Type Flex 3/14Ga. Wire <input type="checkbox"/> V80 Red LED Array - One Row <input type="checkbox"/> V81 Red LED Array - Two Rows <u>Approval and Rating Options</u> <input type="checkbox"/> X5 NSF (National Sanitation Foundation) <input type="checkbox"/> XH* Class I Zone 2 Groups IIC, IIB + H2, IIA Zone 22 Groups IIB, IIA (Class I Div 2 Groups A,B,C,D Class II Div 2 Groups F,G Class III) T3C or T4		
	Size (Width x Length)				Colour Temp. Deg. K					
	1x4				30K - 3000K 35K - 3500K 40K - 4000K 50K - 5000K					
						Lumens				
						26L - 2600lm 52L - 5200lm 78L - 7800lm 104L - 10400lm				

Model Numbers relate to specific designs, refer to product photo and Dimension sections for additional details.

Size	Lumens	System Watts	Temp. Codes (XH only)
1x4	2600	25	T3C
	5200	47	
	7800	75	
	10400	98	

Size	Rows of LED	Lumens	System Watts
1x4	1	2045	54
	2	4090	108

Other options may be available consult factory. Specifications and data subject to change without notice

*Occupancy/Motion Sensors and 1% dimming are not available with Hazardous Location luminaires

