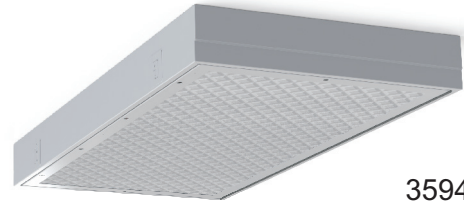


Project	
Type	
Date	
Product Code	
Approved by	

MD1IG 2x2, 2x4 - Medical Surgical Symmetric/Asymmetric

Recessed Luminaire With Inset Door Grid
Medical Surgical Luminaire
LED



3594

Medical
Facility

Product Specifications - Application

The MD1 series by Certolux is an IC-rated specification-grade, sealed surgical/operating room luminaire. The symmetric/asymmetric lens allows for precise optical control and is available in 2x2 and 2x4 configurations. For use in insulated ceilings.

Product Specifications

Housing

Precision formed, 18 gauge cold rolled steel. Wiring access plate or knockouts are provided on back of housing, for flexible conduit attachment.

Mounting

Grid Mount - Holes provided for chain mounting support to building structure, and comes with integral earthquake clips.

LED

LED board arrays offered in various colour temperatures and lumen packages. Optional Green LED arrays available with standard 2000 lumens/2ft (1 or 2 rows max). Green LED arrays operated by separate driver(s).

Door Frame

18 ga. CRS doorframe is secured to housing with stainless steel aircraft cables and captive, flush-mounted Phillips-head fasteners.

Lens

The symmetric/asymmetric acrylic lens is complete with an RFI 3/8" square metalized grid and is grounded to the housing (Option P64) and is complete with a .125" thick clear acrylic underlay. Other lens options available. (See Ordering Key)

Finish

The luminaire is a powder painted white finish and offers a high reflectivity coating for improved lighting performance and efficiency. Anti-microbial finish is also available.

Electrical

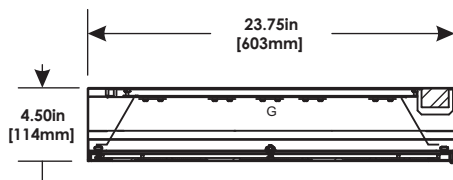
All electrical components are CSA or UL approved. Lamp holders provided ensure positive lamp retention. The standard driver has a THD of <20%. Standard low-voltage dimming (0-10v, 1%). Luminaires are provided with an access plate, to facilitate wiring to external power source.

Approvals

Approved to CSA and UL standards. UL listed for insulated ceilings. MIL STD 461F available upon request (see options).

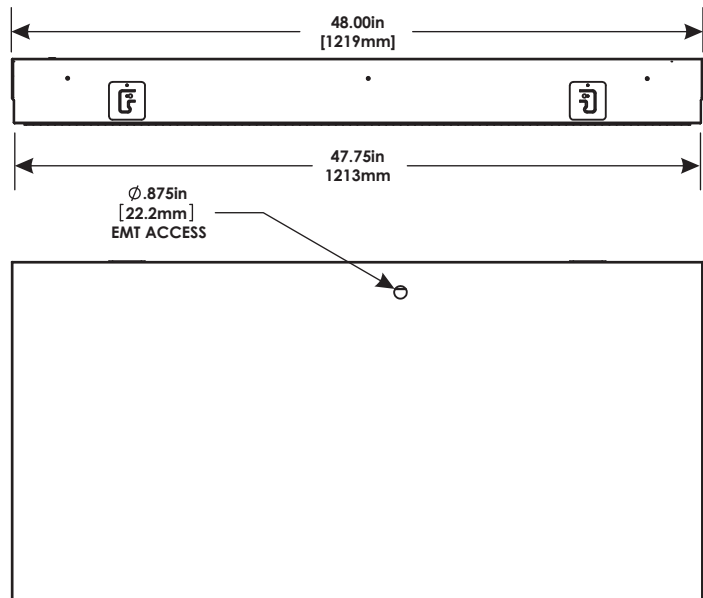


Dimensions



G = Green LED Location (Optional - See Ordering Key)

CROSS SECTION



TOP VIEW

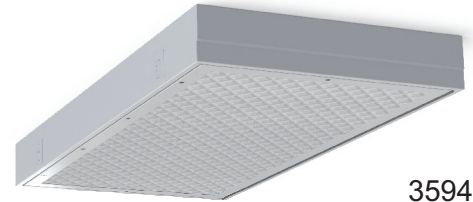
Dimension Note:

Exterior fixture dimensions displayed. Please see installation guide for exact ceiling cut-out and mounting details or consult factory.

Project	
Type	
Date	
Product Code	
Approved by	

MD1IG 2x2, 2x4 - Medical Surgical Symmetric/Asymmetric

Recessed Luminaire With Inset Door Grid
Medical Surgical Luminaire
LED



3594

Product Specifications - Application

The MD1 series by Certolux is an IC-rated specification-grade, sealed surgical/operating room luminaire. The symmetric/asymmetric lens allows for precise optical control and is available in 2x2 and 2x4 configurations. For use in insulated ceilings.

Medical Facility

Ordering

MD1IG-3594		-	LED								
Series	Model	Size (Width x Length)	Light Source	CRI	Colour Temp. Deg. K	Lumens	Voltage	Options			
		2x2 2x4		8 - (80-89) 9 - (90+)†	30K - 3000K 35K - 3500K 40K - 4000K 50K - 5000K	52L - 5200lm 78L - 7800lm 84L - 8400lm 104L - 10400lm 130L - 13000lm 150L - 15000lm	UNV - 120-277V * 347 - 347V	Driver/Controller Options <input type="checkbox"/> B02 Dimming Addressable Digital (DALI) <input type="checkbox"/> B39 Emergency Lighting Battery Pack Housing Construction Options <input type="checkbox"/> C08 Housing Aluminum (Non Ferrous) <input type="checkbox"/> C55 Housing for 1 1/2" T-Bar <input type="checkbox"/> C57 Housing for 2" T-Bar Door Options <input type="checkbox"/> D14 Hinged Door Frame - Stainless Steel Finish Options <input type="checkbox"/> F06 Snow White <input type="checkbox"/> F09 Easy White <input type="checkbox"/> F37 Easy White Antimicrobial <input type="checkbox"/> F36 Snow White Antimicrobial Lens Options <input type="checkbox"/> P64 Lens Symmetric/Asymmetric Acrylic w/ EMI/RFI Grid w/ .125" Clear Acrylic Underlay <input type="checkbox"/> P75 Lens Pattern 12 Acrylic w/ EMI/RFI Grid w/ .125" Clear Acrylic Underlay <input type="checkbox"/> P76 Lens Pattern 19 Acrylic w/ EMI/RFI Grid w/ .125" Clear Acrylic Underlay <input type="checkbox"/> P82 White Translucent Acrylic c/w .125" clear acrylic underlay Wiring Options <input type="checkbox"/> V25 Radio Frequency Filter <input type="checkbox"/> V72 Green LED array - 1 Row <input type="checkbox"/> V73 Green LED array - 2 Rows Reflector Options <input type="checkbox"/> VF1 Full (95% Reflectance) Specular Approvals Options <input type="checkbox"/> X8 IP65 rating <input type="checkbox"/> X15 MIL STD 461F compliant			

Model Numbers relate to specific designs, refer to product photo and Dimension sections for additional details.

Lumen/System Watts

Size	Lumens †	System Watts
2x2	5200	47
	7800	75
	8400	80
2x4	10400	98
	13000	150
	15000	147

Specifications and data subject to change without notice

*Other options may be available consult factory.

**V25 option required. Not available with P56 option

† 90+ CRI reduces lumen output by 20%, not available with 5000K

