

Project	
Type	
Date	
Product Code	
Approved by	

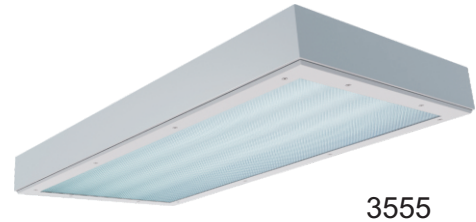
## CRS 2X4 - Cleanroom

Surface Mount 2x4 Cleanroom Luminaire  
Suitable for ISO Class 5 - 8 Cleanrooms  
LED

Cleanroom

### Product Specifications - Application

The CRS2X4 series by Certolux is a specification-grade, LED surface mount, overlapping door, IP65 luminaire, for ISO Class 5 - 8 Cleanrooms. The overlapping single piece door design provides for a continuous seal to the sealed housing. Completely sealed unit to minimize insect and vermin infiltration. For use in Hazardous Locations, consult ordering key. NSF/ANSI 2 Food Zone, Splash Zone and Non-Food Zone Applications (see ordering key).



3555

### Product Specifications

#### Housing

Precision formed, TIG welded, one piece 18 gauge cold rolled steel housing. Welded studs are used in order to mount components, offering superior performance over PEM style fasteners.

#### Mounting

Mounting holes are provided on the back of the housing.

#### Lens and Lens Retention

The standard lens assembly is made with a tempered safety glass sealed to the lens frame with a non-silicone sealant together with an overlay of a pattern #12 acrylic lens, mechanically secured. Other lens options available. (see product ordering guide)

#### Finish

The luminaire is in a polyester powder painted white finish.

#### Door Frame

One piece 60° beveled perimeter door frame, fabricated from 18 gauge, cold rolled steel with TIG welded corners. It is retained by stainless steel aircraft cable when opened. Specialized, military grade, flat head, stainless steel, captive fasteners with integral silicone o-rings easily secure door frame to housing through use of floating cage nuts. Silicone o-rings offer superior performance and longer life over comparable teflon bushings.

#### Door Frame Gasket

Custom shaped, extruded closed cell silicone gasketing is used throughout to ensure precise, seals between door assembly and housing. Vulcanized corners ensure continuity of the seal on the frame gasket. Continuous retention-mounts mechanically secure and evenly distribute force against both gasketing and diffuser.

#### Reflector

Painted white reflector is standard, optional VF1 reflectors are available which are made of specular anodized aluminum with a minimum reflectivity of 95% (see product ordering guide).

#### Approvals

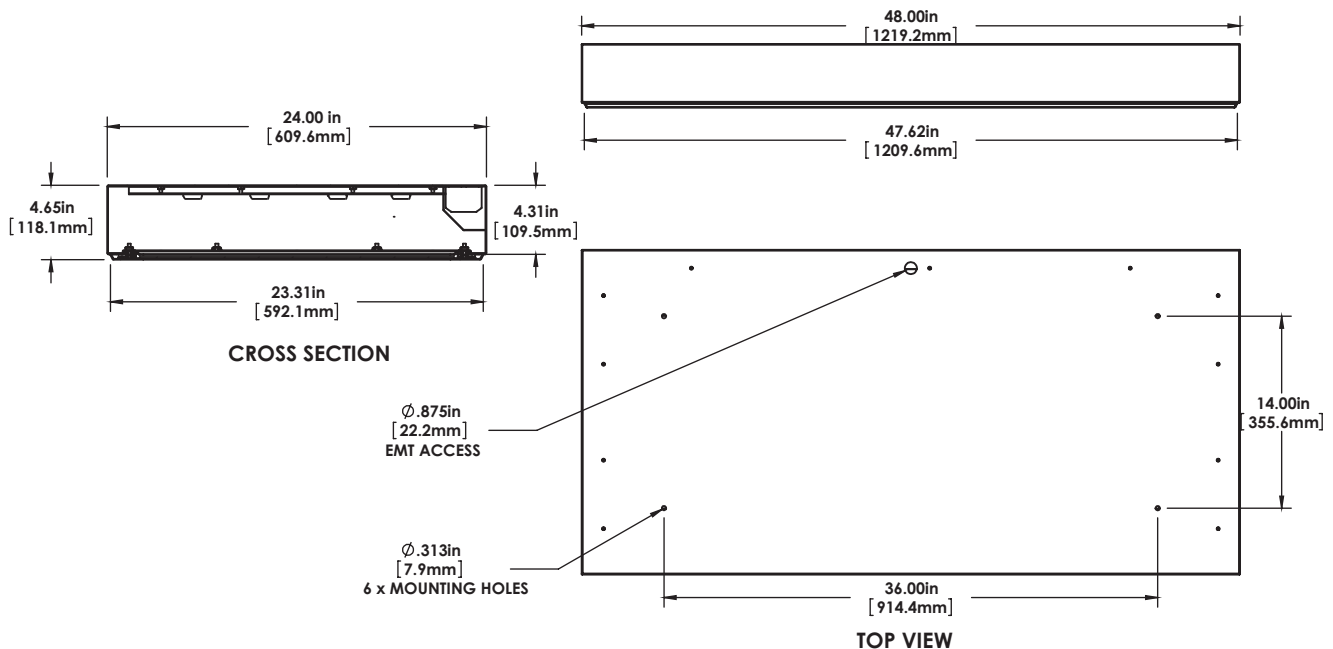
Approved to CSA and UL standards. For use in Hazardous Locations Class I Zone 2, Zone 22. Consult ordering key for HazLoc options and Temperature Codes. NSF Listed (see ordering key).



#### Electrical

Long life LED's coupled with high efficiency drivers provide quality illumination. Rated to deliver an L80 performance >50,000 hours. The standard driver has a THD of <20%. Standard low-voltage dimming (0-10v, 1%). All electrical components are CSA or UL approved. A 1/2" EMT hole is provided for wiring connections.

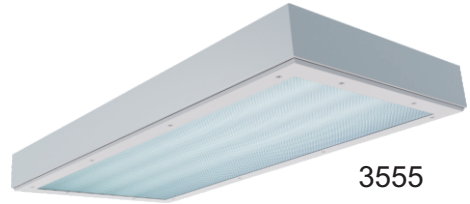
### Dimensions



Project	
Type	
Date	
Product Code	
Approved by	

## CRS 2X4 - Cleanroom

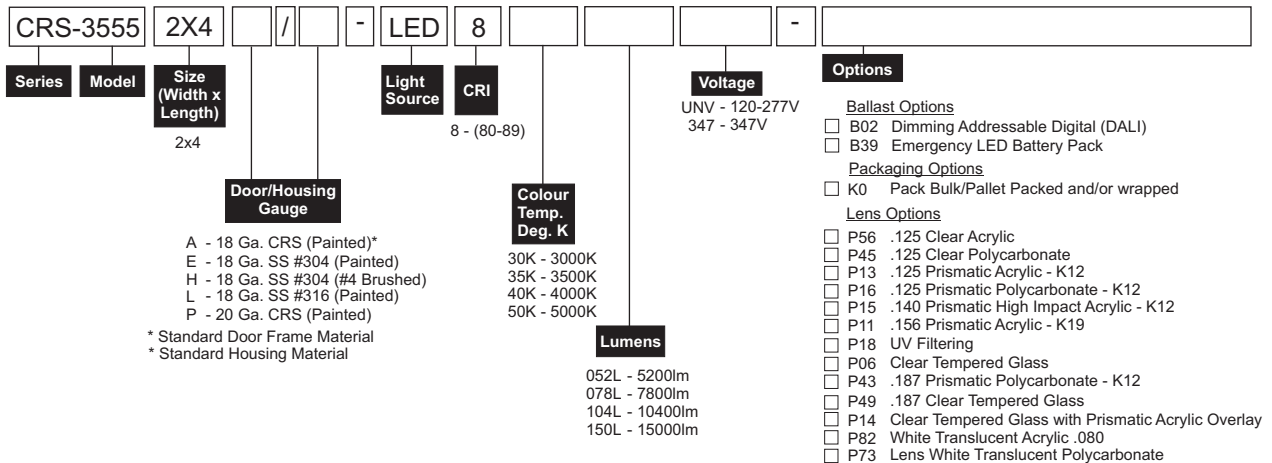
Surface Mount 2x4 Cleanroom Luminaire  
Suitable for ISO Class 5 - 8 Cleanrooms  
LED



### Product Specifications - Application

The CRS2X4 series by Certolux is a specification-grade, LED surface mount, overlapping door, IP65 luminaire, for ISO Class 5 - 8 Cleanrooms. The overlapping single piece door design provides for a continuous seal to the sealed housing. Completely sealed unit to minimize insect and vermin infiltration. For use in Hazardous Locations, consult ordering key. NSF/ANSI 2 Food Zone, Splash Zone and Non-Food Zone Applications (see ordering key).

### Ordering



Model Numbers relate to specific designs, refer to product photo and Dimension sections for additional details.

#### Lumen/System Watts

Size	Lumens	System Watts	Temp. Code (XH Only)
2x4	5200	47	T4
	7800	75	
	10400	98	
	15000	147	

#### Red LED Array - Lumen/System Watts

Size	Rows of LED	Lumens	System Watts
2x4	1	2045	54
	2	4090	108

**NOTE: Occupancy/Motion Sensors and 1% dimming are not available with Hazardous Location luminaires (XH Option)**

Other options may be available consult factory. Specifications and data subject to change without notice

