

# 2015: A YEAR IN REVIEW

## PRODUCT LAUNCHES



### LST Series

Surface-Mount LED luminaires  
Featuring 8 premium-grade fixtures



### LHBC

LED High Bay C  
Commercial-grade high or low bay luminaire



### LHBL

Pendant Mount High Bay L  
Direct/indirect luminaire



### LHBD

Pendant Mount High Bay D  
Premium-grade high or low bay luminaire



### LCOMN

LED Commercial Type N  
Strip luminaire for low-cost, small profile lighting solutions



### LELW

LED Ellipse Type W  
Surface mount luminaire for corridors and stairwells



### LHBG

LED High Bay G  
High bay luminaire, designed for athletic applications

## PRODUCT UPDATES



### LHBB

LED Pendant Mount High Bay B

- -35°C to 55°C ambient temperature
- 80+ CRI standard
- Increased efficacy  $\leq 127$  lm/w
- 20% increase in output



### LHBV

LED High Bay Vapour

- -35°C to 55°C ambient temperature
- 15% increase in lumen output
- Increase in efficacy up to 127 lm/W
- Lower System Watts



### LHBR

LED High Bay Recessed

Accepted into the 2015 IES Progress Report as the highest lumen output 2x2 recessed high bay at 18,000 lumens.



### LEL

LED Ellipse

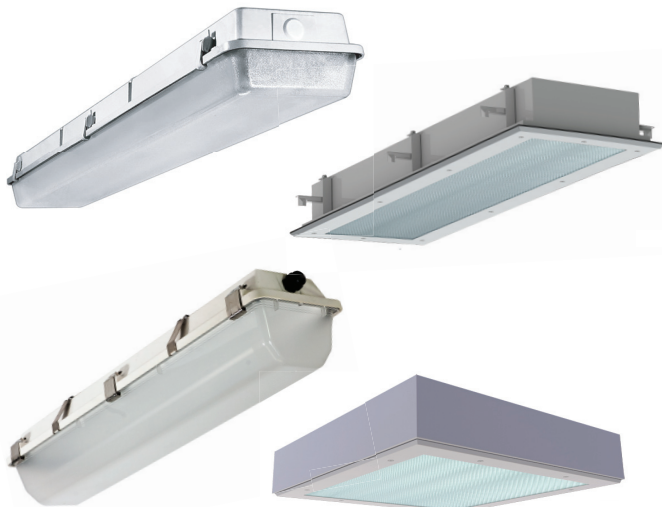
Introduced a new architectural aesthetically pleasing smooth frosted lens



### LRTG & LSTG

LED Troffer Dish Boxed Lens

Updated the lens with a new acrylic material for better light distribution. Also available with optional round smooth acrylic frosted lens (P90)



### Hazardous Location Luminaires

4 additional products have been added to our family of 13 Hazardous Location products. Rated for Class I, Div II (A,B,C,D), Class II, Div II (F,G), and Class III.

New HazLoc Products include:

- **LSVA:** LED Sentry Vapour A
- **SAF Series:** LED Superseal Alpha Flanged
- **CRV Series:** LED Cleanroom Ceiling Vapour Tight
- **CRS-3555:** LED Cleanroom Surface