

LHBU

Harmonious Blend of Precision Engineering and Captivating Design

Visioneering's LHBU is an architectural bay luminaire designed to cultivate an inviting and meticulously illuminated space. Its sleek design is accentuated by curved end caps and a single concave polycarbonate lens. The LHBU offers versatility with 4 design options in 48" and 96" lengths. With lumen packages ranging from 4,000 to 36,000 lumens, 0-10V dimming down to 10%, and an efficacy of up to 138 lumens per watt, the LHBU delivers exceptional illumination and energy performance.

It comes ready for suspended installation right out of the box, with an optional flexible installation kit for surface mounting and stem mounting. The LHBU proudly complies with RoHS and TAA standards, while offering DLC qualified configurations to meet diverse lighting needs.

Features

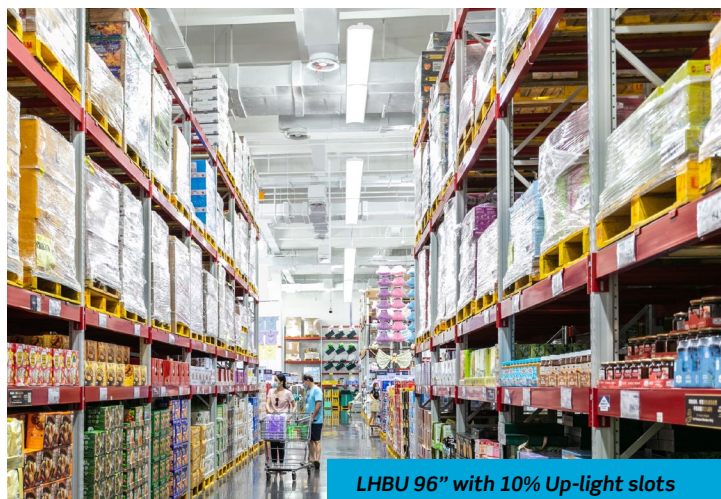
- Standard 0-10V, 10% dimming
- Curved reflector and endcaps

Featured Options

- 10% Up-light slots
- Curved lens with center peak
- 4,000 to 36,000 lumen packages
- Adjustable cable suspension
- Motion sensor
- Flexible installation kit



Standard LHBU (48")

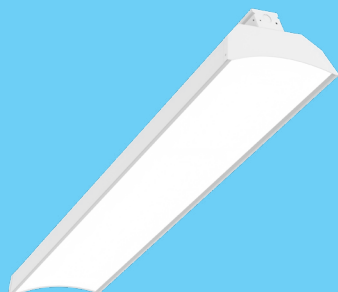


LHBU 96" with 10% Up-light slots

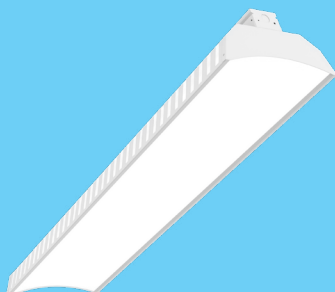
Applications

- Retail and Grocery Stores
- Showrooms & Exhibition Halls
- Warehouse & Industrial Spaces
- Educational Facilities & Classrooms
- Libraries & beyond

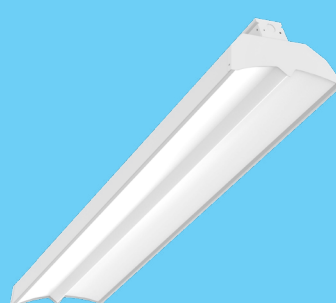
Standard LHBU
48" and 96"



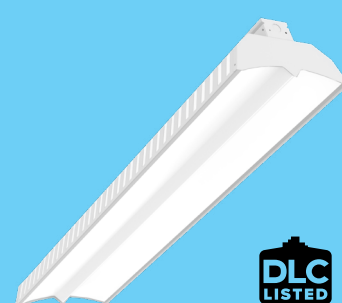
LHBU with Up-light Slots
(C27(DS) Option)



LHBU with Centre Peak
(P122 Option)



LHBU with Uplights/Centre
Peak (P122 & C27(DS) Option)



To learn more about our LHBU lighting solutions, visit viscor.com/lhbu

Lighting Your Vision