



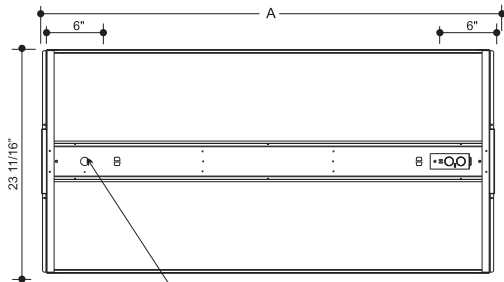
# TDEW - Troffer Dish High-Efficiency Basket

Premium-Grade Recessed High-Efficiency Centre Basket T-Bar Luminaire

Photometrics - Please consult [www.viscor.com](http://www.viscor.com) for photometric results.

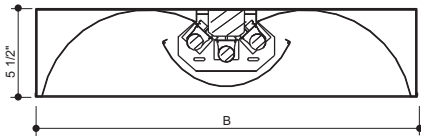
## ProductDetails

### Dimensions

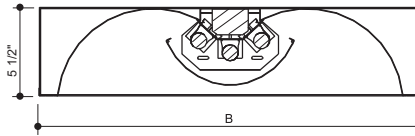


MODEL	NOMINAL LENGTH	A	B
1x4	48"	47 3/4"	11 11/16"
2x2	24"	23 3/4"	23 3/16"
2x4	48"	47 3/4"	23 3/16"

Back View 7/8" K.O.



STATIC Cross Section



AIR SUPPLY/RETURN

### Ordering



**Size (Width x Length)**  
1L  
2L  
3L  
1x4  
2x2  
2x4

**No. of Lamps**  
1L  
2L  
3L

**Lamp Watts**  
See table below

**Lamp Type**  
T5  
T5HO  
T8  
PLL

**Voltage**  
120 - 120V  
347 - 347V  
UNV - 120 - 277V  
UN4 - 347 - 480V

**Ballast Type**  
N - Instant Start  
P - Prog. Start  
R - Rapid Start

#### Ballast Options

(See Option Code Section For More Information)

- B01 Ballast Disconnect - In-line Power Disconnect (CSA-UL Req'd For Voltages above 150v)
- B02 Dimming Addressable Digital (dali)
- B03 Dimming Low Voltage
- B04 Dimming Line Voltage
- B08 Ballast - High Ballast Factor
- B09 Ballast - Low Ballast Factor
- B30 Emergency Lighting Battery Pack Specification Grade
- B33 Emergency Lighting Battery Pack 1-lamp
- B34 Emergency Lighting Battery Pack 2-lamp

#### Packaging Options

- K0 Bulk Pack

#### Fusing and Breaker Options (select one only)

- T5 Fuseholder, In-line Double Pole
- T6 Fuseholder, In-line Single Pole

#### Wiring Options

- V09 Flexible Whip (standard 6' X 3-18 Ga. )
- V19 Modular Wiring System. (consult factory)
- V25 Radio Frequency Filter

#### Approval and Rating Options

- X6 USA Market
- X7 CSA and USA Market

**X = Standard Option**  
Other options may be available.

#### Example:

TDEW2x42L-T5HO54PUNV-B01

#### Lamp Watts

Size	Nom. Lamp Watts			
	T5	T5HO	T8	PLL/Bias
1x4	28	54	32	-
2x2	14	24	17	40, 50, 55
2x4	28	54	32	-

Certain configurations may not be available. Consult the factory for more information.

Note: For recessed drywall applications,

Note: For recessed drywall applications use either a 1x4, 2x2 or 2x4 flange kit (page 243).