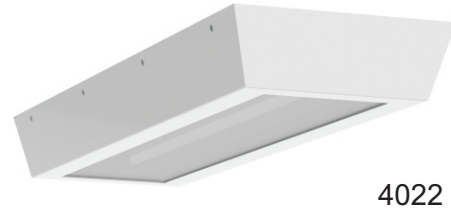


Project	
Type	
Date	
Product Code	
Approved by	

VRS 1x2, 1x4 - Confinement

Ceiling Mount Luminaire
(Cells, Corridors, Dayrooms)
LED



4022

Product Specifications - Application

The VRS series by Certolux is a specification-grade luminaire for maximum security and vandal resistant applications. The clamshell design has concealed hinges, tamper resistant fasteners, contraband trapping backplate, and security lenses. This maximizes impact resistance, prevents contraband concealment and unauthorized fixture tampering/penetration.. The luminaire can be ceiling mounted.

Product Specifications

Housing

Precision die formed 12, 14, or 16 gauge cold rolled steel housing with 12 gauge continuously welded end plates.

Backplate

Die formed 12, 14 or 16 ga. CRS with embossed mounting holes and contraband trap.

Door Frame

Single piece precision die formed with specified material (see product ordering key). Corners are seam welded. Tamper resistant TORX® Head with center pin fasteners secure door frame to housing.

Hinge

Full Length concealed piano style hinge with .500" knuckle and .125" pin (Pin is secured to knuckle) welded to door frame and fastened to backplate.

Lens and Lens Retention

Multiple lens choices for both fixture side and room facing side (see product ordering key for options). Lens maximum thickness .625". The lens is secured with adjustable V style brackets with through studs on housing faceplate.

Finish

The luminaire is in a powder painted white finish and offers a high reflectivity coating for improved lighting performance and efficiency.

Electrical

All electrical components are CSA or UL approved. Lamp holders provided ensure positive lamp retention. Drivers have a THD of less than 20%. Standard low-voltage dimming (0-10v, 1%).

Approvals

Approved to CSA and UL standards.



Vandal
Resistant

Dimensions

