

Project	
Type	
Date	
Product Code	
Approved by	

SAFG 1X4 - Superseal Alpha Flanged - Cleanroom

Premium Recessed Grid Overlapping Door
Cleanroom Luminaire
Suitable for ISO Class 4 - 8 Cleanrooms
LED

Cleanroom

Product Specifications - Application

The SAFG series by Certolux is a specification-grade, **LED** recessed grid IP65, IP66 IC-rated luminaire, for ISO Class 4 Cleanrooms. Available in 1x4 configurations. Ideal for Pharmaceutical manufacturing, Food Processing, Life Sciences and laboratories. NSF/ANSI 2 Food Zone Non-contact and Splash Zone Applications. For use in Wet Locations, Insulated Ceilings. For use in Hazardous Locations, consult ordering key.



3755

Product Specifications

Housing

Precision formed, TIG welded, one piece 18 gauge cold rolled steel housing.

Mounting

Earthquake clips provided.

Lens and Lens Retention

The standard lens assembly is made with a tempered safety glass sealed to the lens frame with a non-silicone sealant together with an overlay of a pattern #12 acrylic lens, mechanically secured.

Door Frame

One piece 60° beveled perimeter door frame, fabricated from 18 gauge, cold rolled steel with TIG welded corners. The door assembly is self centering by means of locating studs. It is retained by stainless steel aircraft cable when opened. Specialized, military grade, flat head, stainless steel, captive fasteners with integral silicone o-rings easily secure door frame to housing through use of floating cage nuts. Silicone o-rings offer superior performance and longer life over comparable teflon bushings. Protective stops prevent the fasteners from being over-tightened and bending the lens door frame. Custom shaped, extruded closed cell silicone gasketing is used throughout to ensure precise, redundant seals between door assembly, housing and plenum. Vulcanized corners ensure continuity of the seal on the frame gasket. Continuous retention-mounts mechanically secure and evenly distribute force against both gasketing and diffuser.

Finish

The luminaire is in a polyester powder painted white finish.

Approvals

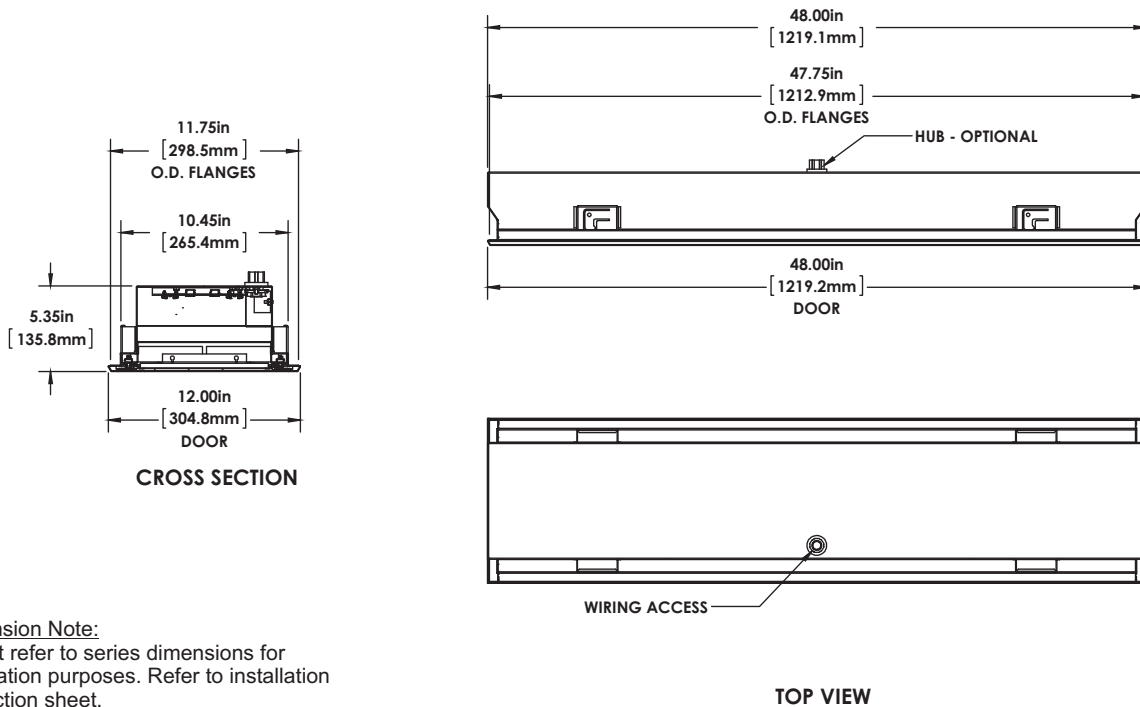
Approved to CSA and UL standards. UL Listed for wet locations, insulated ceilings. For use in Hazardous Locations Class I Zone 2, Zone 22. Consult ordering key for HazLoc options and Temperature Codes.



Electrical

Long life LED's coupled with high efficiency drivers provide quality illumination. Rated to deliver an L80 performance >50,000 hours. The standard driver has a THD of <20%. Standard low-voltage dimming (0-10v, 1%). All electrical components are CSA or UL approved.

Dimensions



Dimension Note:

Do not refer to series dimensions for installation purposes. Refer to installation instruction sheet.

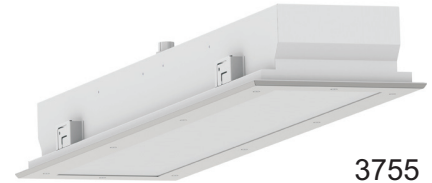
Project	
Type	
Date	
Product Code	
Approved by	

SAFG 1X4 - Superseal Alpha Flanged - Cleanroom

Premium Recessed Grid Overlapping Door
Cleanroom Luminaire
Suitable for ISO Class 4 - 8 Cleanrooms
LED

Product Specifications - Application

The SAFG series by Certolux is a specification-grade, **LED** recessed grid IP65, IP66 IC-rated luminaire, for ISO Class 4 Cleanrooms. Available in 1x4 configurations. Ideal for Pharmaceutical manufacturing, Food Processing, Life Sciences and laboratories. NSF/ANSI 2 Food Zone Non-contact and Splash Zone Applications. For use in Wet Locations, Insulated Ceilings. For use in Hazardous Locations, consult ordering key.



3755

Ordering

SAFG-3755	1X4	-	LED	8									
-----------	-----	---	-----	---	--	--	--	--	--	--	--	--	--

Series **Model** **Light Source** **CRI** **Colour Temp. Deg. K** **Size (Width x Length)** **Voltage** **Options**

8 - (80-89) UNV - 120-277V / 347 - 347V

Colour Temp. Deg. K
 30K - 3000K
 35K - 3500K
 40K - 4000K
 50K - 5000K

Size (Width x Length)
 1x4

Voltage
 UNV - 120-277V
 347 - 347V

Options

Driver/Controller Options

- B02 Dimming Addressable Digital (DALI)
- B39 Emergency LED Battery Pack

Housing Construction Options

- C38 Housing Aluminum .050 Painted
- C44 Housing SS #304 Painted
- C57 Housing for 2" T-Bar

Door Frame Options (painted CRS is standard)

- D3 Door Frame Stainless Steel (#304)
- D9 Door Frame Stainless Steel (#316)
- D10 Door Frame Aluminum .063 Painted
- D17 Door Frame SS (#304) Painted
- D18 Door Frame SS (#316) Painted

Packaging Options

- K0 Pack Bulk

Lens and Shielding Options
(Clear Tempered Glass w/Pattern 12 Prismatic Acrylic overlay is standard)

- P56 Lens Clear Acrylic
- P06 Lens Clear Glass Tempered
- P11 Lens .156 Acrylic - P19
- P13 Lens Prismatic Acrylic - P12 .125" Thick
- P14 Lens Clear Glass Tempered with Prismatic Acrylic Overlay
- P16 Lens Prismatic Polycarbonate - P12
- P73 White Translucent Polycarbonate
- P82 White Translucent Acrylic .080
- P73 Lens White Translucent Polycarbonate

Wiring Options

- V57 Sealed Wireway 90 degree connector w/10ft Liquid Type Flex 3/14Ga. Wire
- V80 Red LED Array - One Row
- V81 Red LED Array - Two Rows

Approval and Rating Options

- X5 NSF (National Sanitation Foundation)
- XH* Class I Zone 2 Groups IIC, IIB + H2, IIA Zone 22 Groups IIB, IIA (Class I Div 2 Groups A,B,C,D Class II Div 2 Groups F,G Class III) T3C or T4

Model Numbers relate to specific designs, refer to product photo and Dimension sections for additional details.

Lumen/System Watts

Size	Lumens	System Watts	Temp. Codes (XH only)
1x4	2600	25	T3C
	5200	47	
	7800	75	
	10400	98	

Red LED Array - Lumen/System Watts

Size	Rows of LED	Lumens	System Watts
1x4	1	2045	54
	2	4090	108

Other options may be available consult factory. Specifications and data subject to change without notice

*Occupancy/Motion Sensors and 1% dimming are not available with Hazardous Location luminaires

