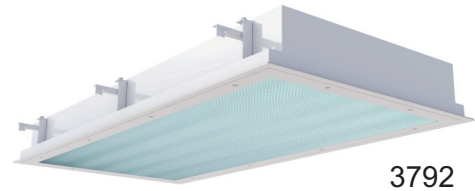


| | |
|--------------|--|
| Project | |
| Type | |
| Date | |
| Product Code | |
| Approved by | |

MD1IF 2x4 - Medical Surgical Symmetric/Asymmetric

Recessed Luminaire With Inset Door Flange
Medical Surgical Luminaire
LED



3792

Medical Facility

Product Specifications - Application

The MD1-3792 series by Certolux is an IC-rated specification-grade, sealed surgical/operating room luminaire. The symmetric/asymmetric lens allows for precise optical control and is available in 2x4 configurations. For use in insulated ceilings.

Product Specifications

Housing

Precision formed, 18 gauge cold rolled steel. Wiring access plate or knockouts are provided on back of housing, for flexible conduit attachment.

Mounting

Flange Mount - Unit is mounted via swing arms

LED

LED board arrays offered in various colour temperatures and lumen packages. Optional Green LED arrays available with standard 2000 lumens/2ft (1 or 2 rows max). Green LED arrays operated by separate driver(s).

Door Frame

The hinged door frame is precision formed of 18 gauge cold rolled steel and has Philips head stainless steel screws on one side.

Lens

The symmetric/asymmetric acrylic lens is complete with an RFI 3/8" square metalized grid and is grounded to the housing (Option P64). Other lens options available. (See Ordering Key)

Finish

The luminaire is a powder painted white finish and offers a high reflectivity coating for improved lighting performance and efficiency. Anti-microbial finish is also available.

Electrical

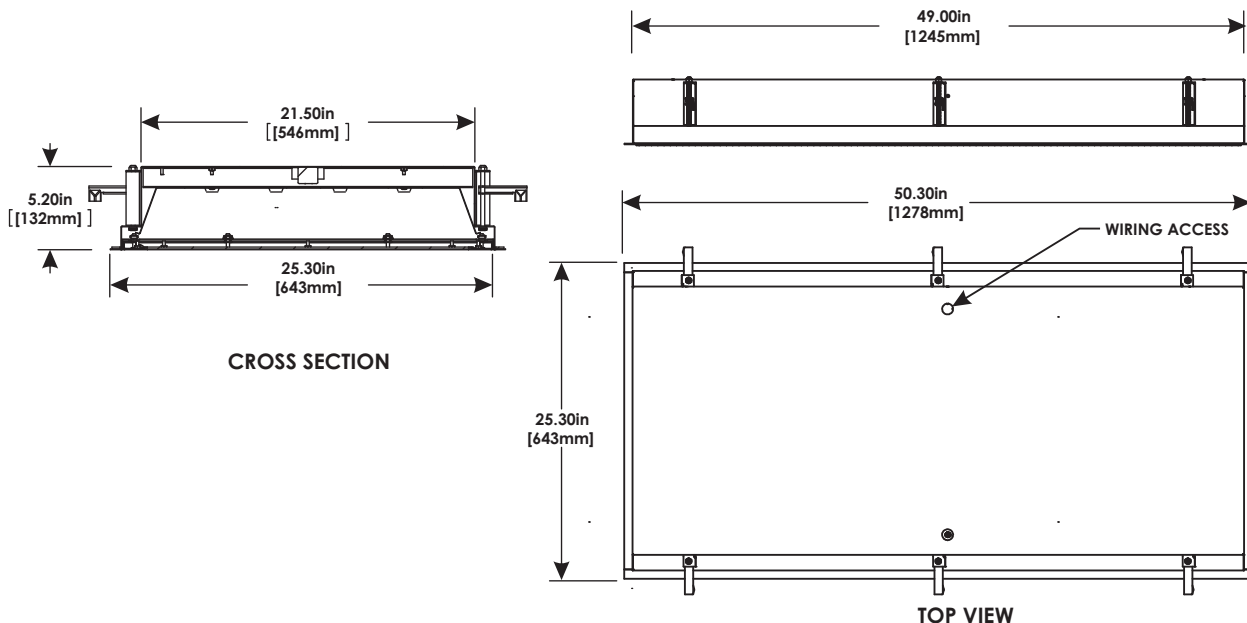
All electrical components are CSA or UL approved. Lamp holders provided ensure positive lamp retention. The standard driver has a THD of <20%. Standard low-voltage dimming (0-10v, 1%). Luminaires are provided with an access plate, to facilitate wiring to external power source.

Approvals

Approved to CSA and UL standards. UL listed for insulated ceilings. MIL STD 461F available upon request (see options).



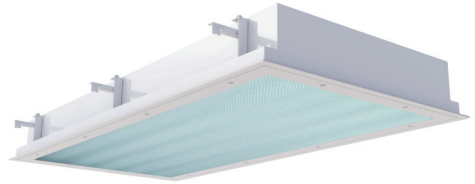
Dimensions



| | |
|--------------|--|
| Project | |
| Type | |
| Date | |
| Product Code | |
| Approved by | |

MD1IF 2x4 - Medical Surgical Symmetric/Asymmetric

Recessed Luminaire With Inset Door Flange
Medical Surgical Luminaire
LED



3792

Product Specifications - Application

The MD1-3792 series by Certolux is an IC-rated specification-grade, sealed surgical/operating room luminaire. The symmetric/asymmetric lens allows for precise optical control and is available in 2x4 configurations. For use in insulated ceilings.

Medical Facility

Ordering

| | | | | | | | | | | | |
|---------------|--------------|------------------------------|---------------------------|--------------|--|--|--------------------------------|---|--|--|--|
| MD1IF-3792 | 2X4 | - | LED | | | | | | | | |
| Series | Model | Size (Width x Length) | Light Source | CRI | Colour Temp. Deg. K | Lumens | Voltage | Options | | | |
| | | | 8 - (80-89) 9 - (90+)† | 80-90 90+ | 30K - 3000K 35K - 3500K 40K - 4000K 50K - 5000K | 104L - 10400lm 130L - 13000lm 150L - 15000lm | UNV - 120-277V * 347 - 347V | <p><u>Driver/Controller Options</u></p> <input type="checkbox"/> B02 Dimming Addressable Digital (DALI) <input type="checkbox"/> B39 Emergency Lighting Battery Pack <p><u>Housing Construction Options</u></p> <input type="checkbox"/> C08 Housing Aluminum (Non Ferrous) <p><u>Finish Options</u></p> <input type="checkbox"/> F06 Snow White <input type="checkbox"/> F09 Easy White <input type="checkbox"/> F37 Easy White Antimicrobial <input type="checkbox"/> F36 Snow White Antimicrobial <p><u>Lens Options</u></p> <input type="checkbox"/> P56 .125 Clear Acrylic <input type="checkbox"/> P64 Lens Symmetric/Asymmetric with EMI/RFI Grid w/ 0.125 Clear Acrylic Underlay <input type="checkbox"/> P75 Lens Pattern 12 Acrylic w/ EMI/RFI Grid w/ 0.125 Clear Acrylic Underlay <input type="checkbox"/> P76 Lens Pattern 19 Acrylic w/ EMI/RFI Grid w/ 0.125 Clear Acrylic Underlay <input type="checkbox"/> P82 White Translucent Acrylic (recommended) <p><u>Wiring Options</u></p> <input type="checkbox"/> V25 Radio Frequency Filter <input type="checkbox"/> V72 Green LED array - 1 Row <input type="checkbox"/> V73 Green LED array - 2 Rows <p><u>Reflector Options</u></p> <input type="checkbox"/> VF1 Full (95% Reflectance) Specular <p><u>Approvals Options</u></p> <input type="checkbox"/> X8 IP65 rating <input type="checkbox"/> X15 MIL STD 461F compliant | | | |

Lumen/System Watts

| Size | Lumens † | System Watts |
|------|----------|--------------|
| 2x4 | 10400 | 98 |
| | 13000 | 150 |
| | 15000 | 147 |

Model Numbers relate to specific designs, refer to product photo and Dimension sections for additional details.

Specifications and data subject to change without notice

*Other options may be available consult factory.

**V25 option required. Not available with P56 option.

† 90+ CRI reduces lumen output by 20%, not available with 5000K

