



Project
Type
Date
Cat #

### Application Features

Commercial-grade, surface, modern styling and high visual comfort featuring a shallow semi-round lens. For use with indoor applications where low-glare, high-quality and ease of installation are required. This luminaire comes with dual high-efficiency reflectors for enhanced performance.

### Specifications

#### Optical System

Smooth extruded frosted linear prismatic acrylic diffuser, offers high levels of efficiency and visual comfort. Indirect reflectors are precision formed and contoured to provide soft, low-glare, indirect illumination, while maintaining high-efficiency and a wide, uniform light distribution.

#### Mounting

This luminaire has been specifically designed for surface or suspended applications.

#### Construction

Die-formed, code gauge steel housing. Precision-formed steel reflector.

#### Finish

White polyester powder painted surfaces.

#### Electrical

Long life LEDs coupled with high efficiency drivers, provide quality illumination. Rated to deliver L80 performance > 50,000 hours.

#### Approvals

Approved to CSA/UL standards. Tested in accordance to IESNA LM-79. Suitable for damp locations.

DesignLights Consortium® Qualified.

All configurations may not be DLC qualified. Check [www.designlights.org/QPL](http://www.designlights.org/QPL) for qualified configurations



#### Warranty

5 year limited warranty. For complete warranty terms visit: [http://viscor.com/assets/Viscor\\_LED\\_Warranty.pdf](http://viscor.com/assets/Viscor_LED_Warranty.pdf)

### Features

- Shallow design
- Enhanced, uniform lighting delivers a balanced amount of light to walls, cubicles, work surfaces and people
- Extruded acrylic lenses
- Standard low voltage dimming (0-10v)
- Available in 1x4, 2x2 and 2x4 configurations

### Options & Adders

- Emergency battery pack
- Flexible metal whip - 6 foot x 3/18 gauge conductors

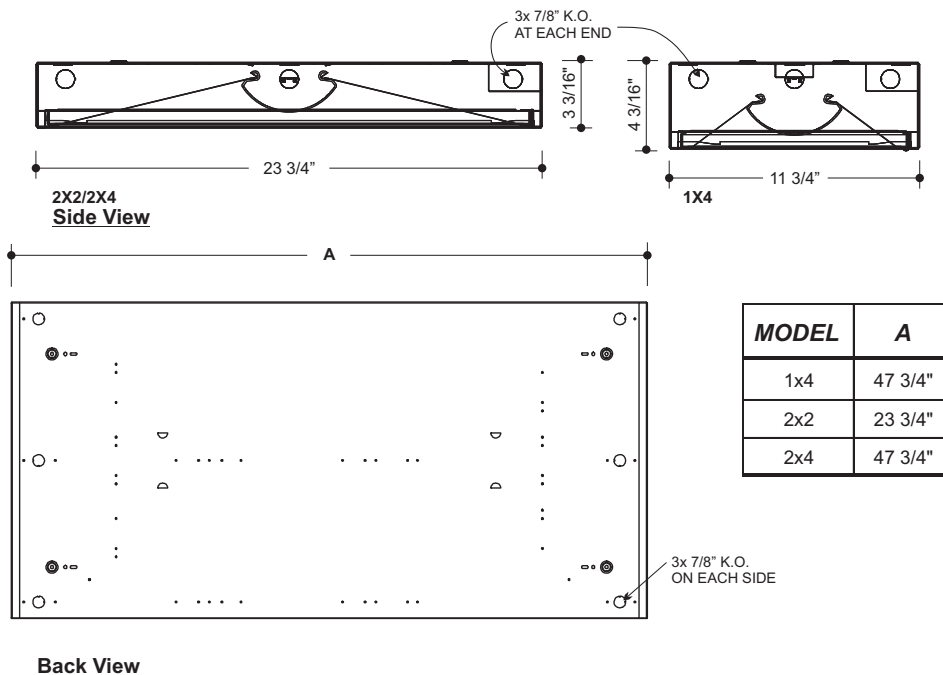
### Applications

- Office Areas
- Retail Stores
- Classrooms
- Corridors
- Hospitals
- Nursing Homes

LED

ARCHITECTURAL LIGHTING

### Dimensions



Project
Type
Date
Cat #

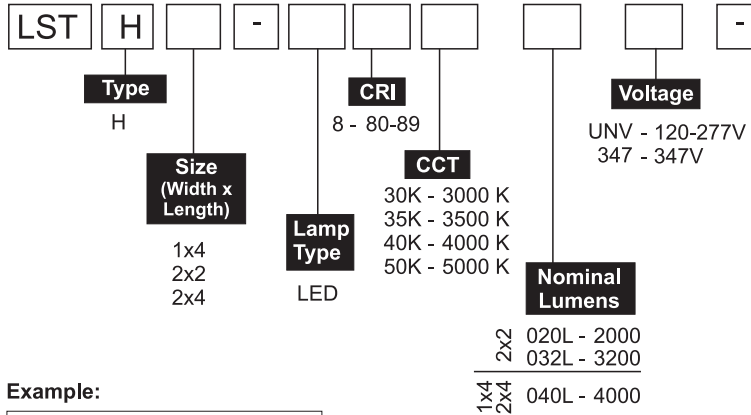
# LSTH LED Surface Type H

Commercial-Grade Surface Low-Profile Single Lensed Luminaire



**Photometrics** - Please consult [www.viscor.com](http://www.viscor.com) for photometric results.

## Ordering



**Example:**

**LSTH2x2-LED840K032LUNV**

\* Other options may be available consult factory. Specifications and data subject to change without notice.

Size	Nominal Lumens	Watts
1x4	040L (4000)	34
2x2	020L (2000)	18
2x2	032L (3200)	28
2x4	040L (4000)	32

### Mounting Accessories (Ordered Separately)

- KIT00001 MOUNTING CHAIN SET (2) 4FT W/ S-HOOKS.M10
- KIT00022 MOUNTING CHAIN SET (2) 3FT W/ S-HOOKS.M10
- KIT00040 MOUNTING CHAIN SET (2) 6FT W/ S-HOOKS.M10
- KIT00042 MOUNTING CHAIN SET (2) 12FT W/ S-HOOKS.M10
- KIT00004 AIRCRAFT "Y" CABLE (10FT) WITH ADJUSTABLE GRIP (2).M36
- KIT00018 S-HOOKS ONLY (SET OF 4) FOR C/S CHAIN.M45

### Driver Options

- B03(1) Dimming (1%) Low Voltage 0-10VDC
- B15 Bi-Level Step Dimming (50/100) \*\*
- B39 Emergency Lighting Battery Pack - LED

### Packaging Options

- K0 Bulk Pack/ Pallet Packed and/or Wrapped

### Wiring Options

- V08 Flexible Feed Cord (single circuit only) 6ft Standard

\*\* Not available for 347V

LED

ARCHITECTURAL LIGHTING