



Project
Type
Date
Cat #

Application Features

Specification-grade, articulating compact fluorescent strip luminaire. For use with indoor applications, where compact design, high-performance and ease of installation are required (such as display cabinets). This luminaire's articulating design ensures that its staggered lamps prevent dark spots or shadows which appear at the socket-ends between conventional row-mounted strip fixtures which in turn makes it ideal for circular coves or coves with curves.

Specifications

Mounting

Mounting holes are provided. Articulating design allows continuous row-mounting along horizontally curved paths.

Construction

Die and brake-formed, code gauge, pre-painted white steel. Screw-fastened end plates can be repositioned to serve as joiners for continuous row-mounting, thus forming a continuous, uninterrupted wireway (on non-welded units and on units over 14 inches only). Single wireway cover on non-tandem units.

Finish

Pre-painted, high-reflectance white housing

Electrical

Sufficient knockouts are provided for connections and through wiring.

Approvals

Approved to CSA and UL standards.

Features

- Designed specifically for row-mounting
- Articulates for mounting onto horizontally curved surfaces
- Overlapping lamps eliminate "socket-end" dark spots
- Available in PLL and PLS configurations

Options & Adders

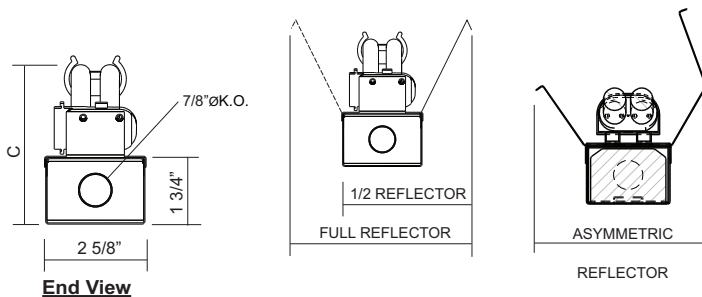
- Asymmetric, half or full reflector available in white or enhanced specular aluminum with a reflectance of 95%
- Dimmable ballast
- 20 gauge riveted construction
- In-line fuse holder
- Quick connect wiring harness for row-mounting (consult factory)

Applications

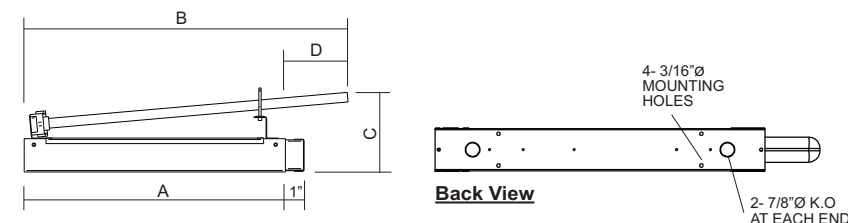
- Coves
- Indirect Lighting
- Restaurants
- Retail Stores
- Valances

INDUSTRIAL/COMMERCIAL LIGHTING

Dimensions



NOMINAL FIXTURE LENGTH (in.)	LAMP WATTAGE	M.O.L. LAMP LENGTH (in.)	FIXTURE LENGTH (Without Joiner)	OVERALL FIXTURE LENGTH (Including Lamp Overhang)	FIXTURE DEPTH (Including Max. Lamp Height)	LAMP OVERHANG
			A	B	C	D
04	13	7	4	7 1/4	4 1/8	3 1/4
07	18	10 1/2	7 1/2	10 5/8	4 5/8	3 1/8
09	24 (27)	12 11/16	9 1/2	13	4 1/2	3 3/8
13	36 (39)	16 7/16	13 1/2	16 5/8	4 3/8	3 1/8
19	40	22 1/2	19 1/2	22 3/4	4 5/8	3 1/4
19	50	22 1/2	19 1/2	22 3/4	4 5/8	3 1/4



Project
Type
Date
Cat #

BSTAG BiAx Staggered

Specification-Grade Staggered Compact Fluorescent Strip Luminaire



Photometrics - Please consult www.viscor.com for photometric results.

Ordering

BSTAG [] [] [] - [] [] [] [] - [] **Options**

Typical Number of lamps in Cross Section
1

Nom. Length (in.)
04 - 4
07 - 7-1/2
09 - 9-1/2
13 - 13-1/2
19 - 19-1/2

Lamp Type
PLS - PLS 2-Pin
PLL - PLL/Biax

Lamp Watts
See Table below

Ballast Type
N - Instant Start
P - Program Start
R - Rapid Start
S - Switch Start

Voltage
120 - 120V
347 - 347V
UNV - 120-277V

Tandem
(Blank) - N/A
T2 - Two Disjointed Housings
T3 - Three Disjointed Housings

Ballast Options
(See Option Code Section For More Information)

- B02 Dimming Addressable Digital (dali)
- B03 Dimming Low Voltage (0-10v)
- B04 Dimming Line Voltage

Housing Construction Options (select one only)

- C06 Housing 20 Gauge Riveted

Packaging Options (select one only)

- K0 Pack Bulk/ Pallet Packed and/or Wrapped
- K1 Pack Single

Reflector Options (select one only)

- R04 Reflector Solid 1/2 White
- R06 Reflector Solid Asymmetric White
- R08 Reflector Solid Full White
- VF1 Reflector Solid Full VF-1
- VF2 Reflector Solid 1/2 VF-1
- VF4 Reflector Solid Asymmetric VF-1

Fusing and Breaker Options (select one only)

- T5 Fuseholder, In-line Double Pole
- T6 Fuseholder, In-line Single Pole

Wiring Options

- V28 Wire Harness For Row Mounting With Plug-In Quick Connectors, Single Circuit, 14 Ga.

Approval and Ratings Options

- X7 Dual CSA and USA Markets

Example:
BSTAG119-PLL40PUNV-B01

Lamp Watts

Length	Nominal Lamp Watts	
	PLS 2-Pin	PLL Biax
04	13	-
07	-	18
09	-	24
13	-	36
19	-	40, 50, 55, 80

Other options may be available consult factory.
Specifications and data subject to change without notice.

INDUSTRIAL/COMMERCIAL LIGHTING