

Project
Type
Date
Cat #

Application Features

Specification-grade, surface-mounted wrap-around luminaire with low-brightness linear sides. For use with indoor applications where existing luminaires can be replaced with newer energy-efficient lamp and ballast combinations while covering existing ceiling lines, unpainted areas and holes from recessed lighting, i.e. down lights.



Specifications

Optical System

Standard diffuser is clear acrylic with prismatic bottom and ribbed linear sides designed for even and low-glare illumination. Optional reflectors are available in specular aluminum with a minimum reflectance of 95%.

Mounting

Mounting holes are provided.

Construction

Precision-formed, steel housing. Flattened knockouts are provided on ends for conduit attachment. Diffuser hinges from either side in a lift and shift manner and is self-centered for easy re-lamping and re-ballasting. This luminaire is suitable for row-mounting.

Finish

High-reflectivity coated reflecting surfaces for improved efficiency.

Electrical

Rotary lampholders ensure positive lamp retention. Sufficient knockouts are provided for connections and through wiring.

Approvals

Approved to CSA and UL standards.

Features

- Ideal for retrofit installations
- Extra wide footprint ensures coverage of existing ceiling lines and holes
- Available with 1 or 2 lamps (T5, T8 and T12 configurations)
- Clear, acrylic diffuser with prismatic bottom and ribbed linear sides
- Diffuser self-aligns and hinges from either side for easy re-lamping and re-ballasting
- Continuous row-mounting capability

Options & Adders

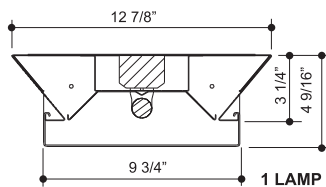
- Enhanced specular aluminum reflector with a minimum reflectance of 95%
- Dimmable and Emergency ballast
- Joiner band

Applications

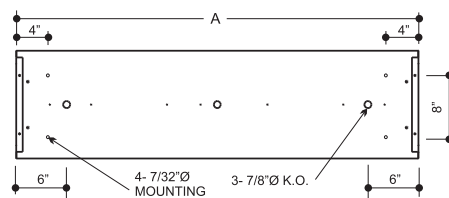
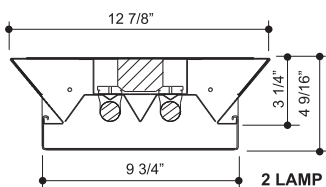
- Classrooms
- Corridors
- Office Areas
- Retail Stores and Supermarkets

INDUSTRIAL/COMMERCIAL LIGHTING

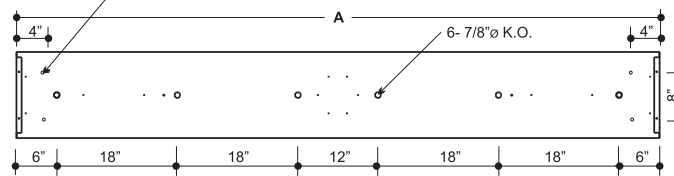
Dimensions



Cross Section



Back View 4'



Back View 8'

MODEL		LENGTH
CROSS SECTION		
1 LAMP	2 LAMP	A (in)
124	224	24 1/16
136	236	36 1/16
148	248	48 1/16
148/2	248/2	96

Project
Type
Date
Cat #

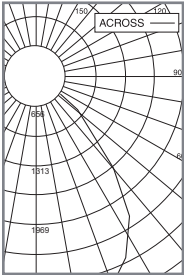
BF Bigfoot

Specification-Grade Surface-Mounted Retrofit Ceiling Luminaire



Photometrics - BF148-T8N120-VF1 - Efficiency 79.3%

Candle Distribution



Luminance Summary-CD. / SQ. M.

ANGLE	ALONG	45	ACROSS
45	2396	2253	2277
55	1589	1495	1639
65	1020	1057	1419
75	890	1010	1701
85	436	1000	1947

Candle Power Summary

ZONE	LUMENS	% LAMP	% LUMINAIRE
0 - 30	853.68	28.90	33.00
0 - 40	1359.16	46.10	52.60
0 - 60	2055.20	69.70	79.50
0 - 90	2442.80	82.80	94.50
40 - 90	-	-	-
60 - 90	-	-	-
90 - 180	141.05	4.80	5.5
0 - 180	2583.84	87.60	100.00

Ordering



Typical Number of lamps in Cross Section

1
2

Nom. Length (in.)
24
36
48

Lamp Type
T5
T5HO
T8
T8HO
T12SL
T12HO

Lamp Watts
See Table below

Voltage

120 - 120V
347 - 347V
UNV - 120-277V
UN2 - 277-347V
UN4 - 347-480V

Ballast Type

N - Instant Start
P - Program Start
R - Rapid Start

Tandem

(Blank) - N/A
/2 - Single Housing
T2 - Two Disjointed Housings
/2T2 - Two Disjointed Tandem Housings

Ballast Options

(See Option Code Section For More Information)

- B02 Dimming Addressable Digital (dali)
- B03 Dimming Low Voltage (0-10v)
- B04 Dimming Line Voltage
- B08 Ballast - High Ballast Factor
- B09 Ballast - Low Ballast Factor

Housing Construction Options

- C06 Housing 20 Gauge Riveted

Packaging Options (select one only)

- K0 Pack Bulk/ Pallet Packed and/or Wrapped

Mounting Options

- M15 Mounting Joinder Band

Reflector Options

- VF1 Reflector VF1 Solid Full (95% Reflectance) Specular

Approval and Rating Options

- X7 Dual CSA and USA Market

Example:

BF148-T528PUNV-B01C06

Lamp Watts

Length	Nominal Lamp Watts				Lamp Length (in)	
	T5	T5HO	T8	T8HO	T12SL	T12HO
24	14	24	17	-	-	-
36	21	39	25	-	-	-
48	28	54	32	44	-	-
96	-	-	59	86	96	96

Other options may be available consult factory.
Specifications and data subject to change without notice.

INDUSTRIAL/COMMERCIAL LIGHTING