



Vents shown only available on the BB3

Project
Type
Date
Cat #

Application Features

Premium metal enclosure for remote mounting ballasts. For use with indoor applications that require single or multiple remote ballasts.

Specifications

Mounting

Mounting holes are provided.

Construction

Die and brake-formed, heavy-gauge steel housing assembly.

Finish

Pre-painted, high-reflectance white housing.

Electrical

Sufficient knockouts are provided for connections.

Approvals

Approved to CSA and UL standards.

Features

- Available in a variety of sizes and for multiple ballasts
- Heavy-duty construction

Options & Adders

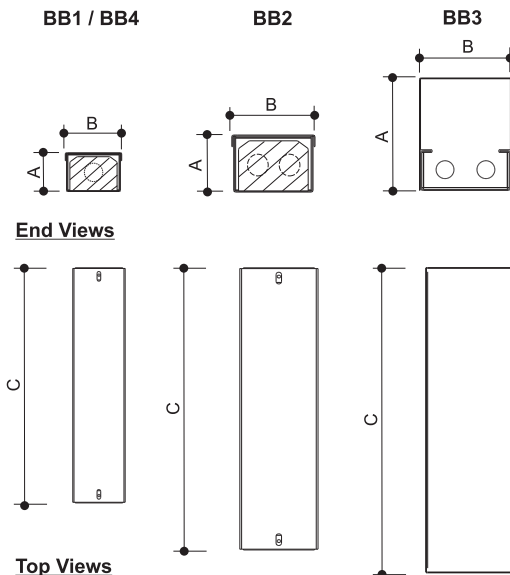
- 20 gauge heavy-duty construction
- Aluminum construction
- Heat removal vents

Applications

- Cold Storage Facilities
- Dusty Environments
- Inaccessible Areas

MISCELLANEOUS LIGHTING

Dimensions



MODEL CONFIGURATION	A	B	C
BB1	1 3/4"	2 11/16"	12"
BB2	2 3/4"	3 7/16"	14 5/8"
BB3	5 1/2"	4 1/2"	18"
BB4	1 3/4"	2 11/16"	24"
BB	Consult Factory for other sizes.		

Project
Type
Date
Cat #

BB Ballast Box

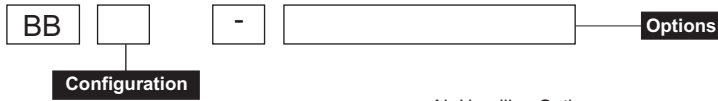
Remote Ballast Enclosure



Vents shown only available on the BB3

Photometrics - Please consult www.viscor.com for photometric results.

Ordering



Configuration

- 1
- 2
- 3
- 4

Air Handling Options

- A2 Air Heat Removal Vents *

Construction

- C07 Housing 20 Gauge Welded
- C08 Housing Aluminum

Finish (Pre-painted white is standard)

- F01 Black

* Only available with the BB2 and BB3.

MISCELLANEOUS LIGHTING