

Product Specifications - Application Features

Premium-grade wall-mounted vanity light. For use with indoor applications where low-glare, high-quality and ease of installation are required.



Product Specifications

Optical System

Wrap-around, extruded ribbed white opal diffuser , designed for durability and visual comfort.

Mounting

Mounting holes are provided.

Construction

Die-formed, code gauge pre-painted, white steel. Diffuser is retained by a grooved formation running the length of the fixture and is held in place on both ends by the end caps.

Finish

Pre-painted, high-reflectance white housing.

Electrical

Rotary lampholders ensure positive lamp retention. All electrical components are CSA approved or UL listed. See product selection for optional ballasts. Knockouts are provided for connection and through wiring.

Approvals

Approved to CSA and UL standards (UL, or equivalent, marked only when specified).

Notes

Horizontal lines for notes.

Product Features

- Traditional vanity design
- Ribbed, white opal, acrylic wrap-around diffuser
- Available in T5 and T8 configurations

Options&Addders

- Lamps available (please specify colour temperature and wattage)
- Multi-level switching
- Dimmable ballast
- Emergency ballast
- Radio interference filter (120V - 277V)
- Turn switch
- Toggle switch
- Pull chain switch
- Joiner band
- Convenience outlet

Applications

- Bathrooms
- Corridors
- Utility Areas
- Under Cabinets
- Vanities



**Certain features and configurations may not be available. Consult the factory for more information.*

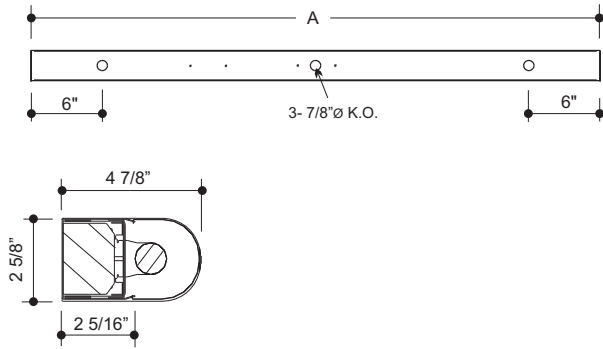
ATL - Atlas

Premium-Grade Wall-Mounted Vanity Light

Photometrics - Please consult www.viscor.com for photometric results.

ProductDetails

Dimensions



MODEL	
1 LAMP	Length A (in.)
118	18"
124	24"
136	36"
148	48"

1 LAMP

Ordering



Typical Number of lamps in Cross Section
1

Nom. Length (in.)
18
24
36
48

Lamp Watts
See table below

Lamp Type
T5
T5HO
T8

Voltage
120 - 120V
347 - 347V
UNV - 120-277V
UN4 - 347-480V

Ballast Type
N - Instant Start
P - Prog. Start
R - Rapid Start

- Ballast Options**
(See Option Code Section For More Information)
- B01 Ballast Disconnect - In-line Power Disconnect (CSA-UL Req'd For Voltages above 150v)
 - B02 Dimming Addressable Digital (dali)
 - B03 Dimming Low Voltage
 - B04 Dimming Line Voltage
 - B08 Ballast - High Ballast Factor
 - B09 Ballast - Low Ballast Factor
 - B30 Emergency Lighting Battery Pack Spec Grade
 - B33 Emergency Lighting Battery Pack 1-lamp
 - B34 Emergency Lighting Battery Pack 2-lamp

- Finish Options (White is standard)**
- F01 Black
- Packaging Options (select one only)**
- K0 Pack Bulk
 - K1 Pack Single

- Mounting Options**
- M15 Joiner Band
- Switch Options (select one only)**
- S1 Switch Pull-chain
 - S2 Switch Pull-chain 3-way
 - S6 Switch Turn

- Wiring Options**
- V02 Convenience Outlet
- Approval and Rating Options**
- X6 USA Market
 - X7 Dual CSA and USA Markets

Example:
ATL148-T832N120

Lamp Watts

Length	Nominal Lamp Watts		
	T5	T5HO	T8
18	-	-	14
24	14	24	17
36	21	39	25
48	28	54	32

Certain configurations may not be available. Consult the factory for more information.

X = Standard Option
Other options may be available.

ARCHITECTURAL LIGHTING